

GW491Q/491QE 系列汽油机
零部件手册

GW491Q/491QE series gasoline
engine parts manual

长城汽车股份有限公司

Great Wall Motor Company Limited

前 言

长城 GW491 系列汽油机是参照丰田 4Y 发动机制造的车用发动机，其中采用美国德尔福、上海联合电子公司多点燃油喷射及电子控制系统的 GW491QE 型汽油机，动力性、经济性、可靠性等指标均达到当前国际先进水平；其环保指标如排放、噪声、抗无线电干扰、曲轴箱强制通风、燃油蒸发控制等，均优于或达到国家现行标准、法规要求，且具有结构紧凑、体积小、质量轻和使用、维修方便等特点。

《长城 GW491 系列汽油机零部件手册》是根据保定长城内燃机制造有限公司现行长城 GW491 系列汽油机生产图纸和工艺路线编绘的，供广大用户了解长城 GW491 系列汽油机零部件构造、装配关系和选购配件时参考。

本手册包含了长城 GW491 系列汽油机的多种机型，每个部分（零部件总成或系统）均以某一个（或几个）机型为基本型，列在明细的首位，其它机型与基本型不通用的专用零部件列在后面。

标准件的代号，标注“GB……”的为国家标准；标注“JB……”的为（机械）部颁标准；标准“Q……”的为汽车标准代号。

零部件明细表中的“零部件代号”栏是指零部件相应插图编号，“数量”栏为本总成所需该零部件的总数量。

长城 GW491 系列汽油机执行标准：GB/T1147-1987“内燃机通用技术条件”。

随着技术进步和用途的拓展，长城 GW491 系列汽油机的机构和附件会有改进和变化，恕不能及时通告用户。本手册中有些零部件可能与今后生产的产品不符，只能以现行产品为准。因此您所购买的零部件可能与本手册不完全一致，请用户注意。

未经保定长城内燃机制造有限公司同意，不得将本手册翻印、出版。保定长城内燃机制造有限公司明确保留法律规定的有关版权的一切权利，保留更改权和解释权。

保定长城内燃机制造有限公司
二零零六年三月十日

Preface

The gasoline engine of Great Wall GW 491 series is the automotive engines manufactured referring to Toyota Motor Corp. Ltd 4Y engine, in which the GW491QE gasoline engine with multiple point fuel jet and electric control system of the USA DELPHI, German Bosch are applied, the dynamic behavior, economic efficiency and reliability etc. can reach to the present international level, and the environmental protection criterions, such as exhaust emission, noise, anti radio interference, crank case forced air ventilation, fuel evaporation control etc. are all excelled or reached to the requirements of the existing national standards, laws and regulations. It also has compact structure, small volume, light weight, convenient operation and maintenance etc characteristics.

《Great wall GW491 series gasoline engine parts manual》 is complied according to the existing production design and craft routing, which can provide an overall understand of the parts structure 、 assembling relation and a reference for the customer to select fittings.

The manual includes variety of engines of Great Wall GW491 series, each part (parts assembly or system) of which has one (or much more) as the basic type listing on the top of the lists, while special parts of other type which have not the same utility as the basic type's are listed following.

The code of standard part labeled 'GB' is the national standard; 'JB' is the standard issued by Machinery department; 'Q.....' is the vehicle standard code.

'PART CODE' in the parts list is the corresponding drawing number, the column 'QTY' is the total amount of the parts needed in the assembly.

The executive standard for GW491 series gasoline engine: Reciprocating internal combustion engines—General technical specifications.

With the development of technology and the increasing expansion of purpose, there will be some improvement and changes to the engine structure and fittings of GW491 series, so forgive us that we can not notify the customers in time. The parts stated in this manual maybe not completely the same as the future parts, so the existing production will be prevail. Therefore, please take care that the parts purchased maybe not completely the same as the manual.

It is prohibited to reprint and issue this drawing without the permission of Baoding Great wall Internal Combustion Engine Manufacturing Co., Ltd. The company reserve all the copyright regulated by the law, so does right of modifying and explanation.

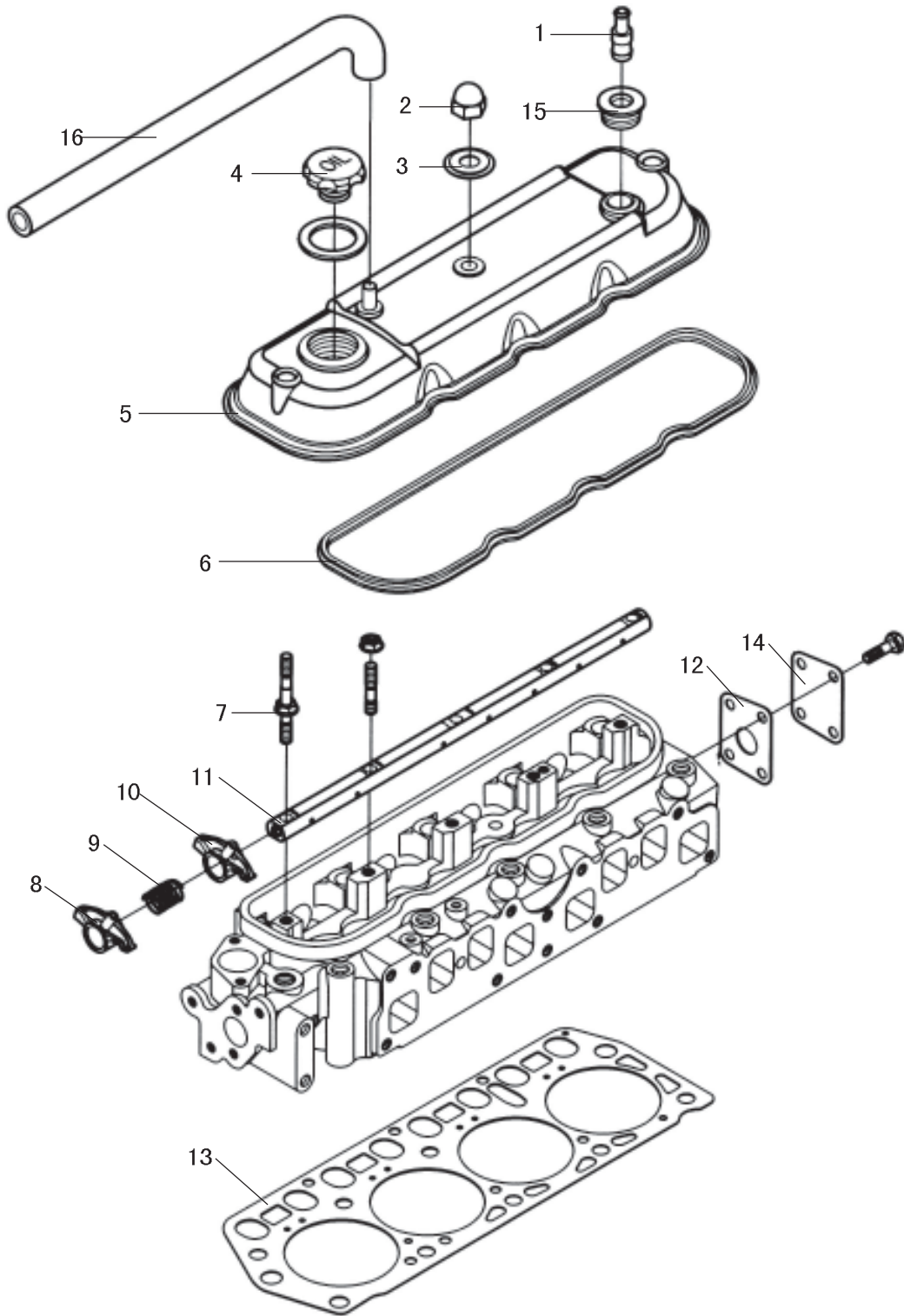
Baoding Great wall Internal Combustion Engine Production Co., Ltd.

Mar. 10th 2006

目 录

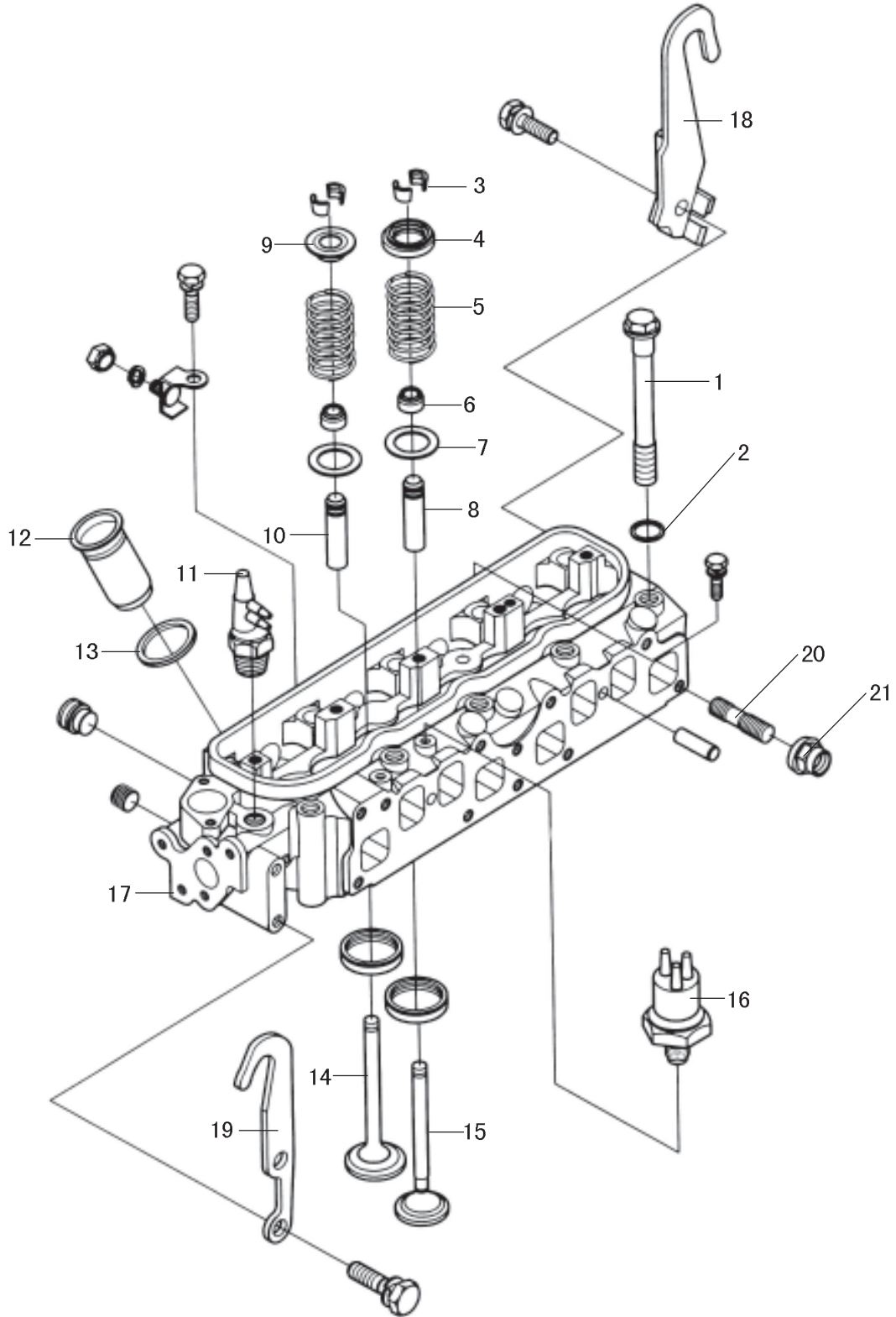
气缸盖总成（一）CYLINDER HEAD ASSEMBLY(1).....	(01)
气缸盖总成（二）CYLINDER HEAD ASSEMBLY(2).....	(03)
气缸体总成（一）CYLINDER BLOCK ASSEMBLY (1).....	(05)
气缸体总成（二）CYLINDER BLOCK ASSEMBLY (1).....	(07)
曲轴飞轮和活塞连杆总成 CRANK SHAFT FLYING WHEEL AND PISTON CONNECTING ROD ASSEMBLY.....	(09)
凸轮轴总成 CAMSHAFT ASSEMBLY.....	(11)
离合器总成 CLUTCH ASSEMBLY.....	(13)
机油泵、机油集滤器和油底壳总成 OIL PUMP, OIL SUCTION FILTER AND OIL PAN ASSEMBLY.....	(15)
机油尺和机油滤清器总成 OIL LEVEL GAUGE AND OIL FILTER ASSEMBLY.....	(17)
化油器汽油机进排气系统 CARBURETOR GASOLINE ENGINE INTAKE/EXHAUST SYSTEM.....	(19)
联合电子多点电喷汽油机进气系统 UNION ELECTRONICS CO., LIT MULTI POINT ELECTRIC INJECTION GASOLINE ENGINE AIR INTAKE SYSTEM.....	(21)
德尔福多点电喷汽油机进气系统 DELPHI MULTI POINT ELECTRIC INJECTION GASOLINE ENGINE AIR INTAKE SYSTEM.....	(23)
多点电喷汽油机排气系统 MULTI-POINT ELECTRIC INJECTION GASOLINE ENGINE EXHAUST SYSTEM.....	(25)
化油器汽油机供油系统 CARBURETTOR GASOLINE ENGINE FUEL FEEDING SYSTEM.....	(27)
联合电子多点电喷汽油机供油系统 UNION ELECTRONICS CO., LIT MULTI INJECTION GASOLINE ENGINE FUEL FEEDING SYSTEM.....	(29)
德尔福多点电喷汽油机供油系统 DELPHI MULTI POINT INJECTION GASOLINE ENGINE FUEL FEEDING SYSTEM.....	(31)
冷却系统（一）COOLING SYSTEM (1).....	(33)
冷却系统（二）COOLING SYSTEM (2).....	(35)
起动机和交流发电机总成 STARTING MOTOR AND AC GENERATOR ASSEMBLY.....	(37)
化油器汽油机电气系统 CARBURETTOR GASOLINE ENGINE ELECTRICAL SYSTEM.....	(39)
电喷汽油机电气系统 ELECTRIC INJECTION GASOLINE ENGINE ELECTRICAL SYSTEM.....	(41)
联合电子多点电喷汽油机电喷系统 UNION ELECTRICIS GASOLINE ENGINE MULTI POINT ELECTRIC INJECTION SYSTEM.....	(43)
德尔福多点电喷汽油机电喷系统 DELPHI GASOLINE ENGINE MULTI POINT ELECTRIC INJECTION SYSTEM.....	(45)
汽油机支承总成 GASOLINE ENGINE SUPPORT ASSEMBLY.....	(47)
欧III系统专用件（一）E III SYSTEM SPECIFIC(1).....	(49)
欧III系统专用件（二）E III SYSTEM SPECIFIC(2).....	(51)
德尔福系统专用件（欧III）DELPHI SYSTEM SPECIFIC(E III).....	(53)
德尔福系统专用件（欧III）DELPHI SYSTEM SPECIFIC(E III).....	(55)
德尔福系统专用件（欧III）DELPHI SYSTEM SPECIFIC(E III).....	(57)
联电系统专用件（欧III）UAES SYSTEM SPECIFIC(E III).....	(59)

气缸盖总成 (一) CYLINDER HEAD ASSEMBLY(1)



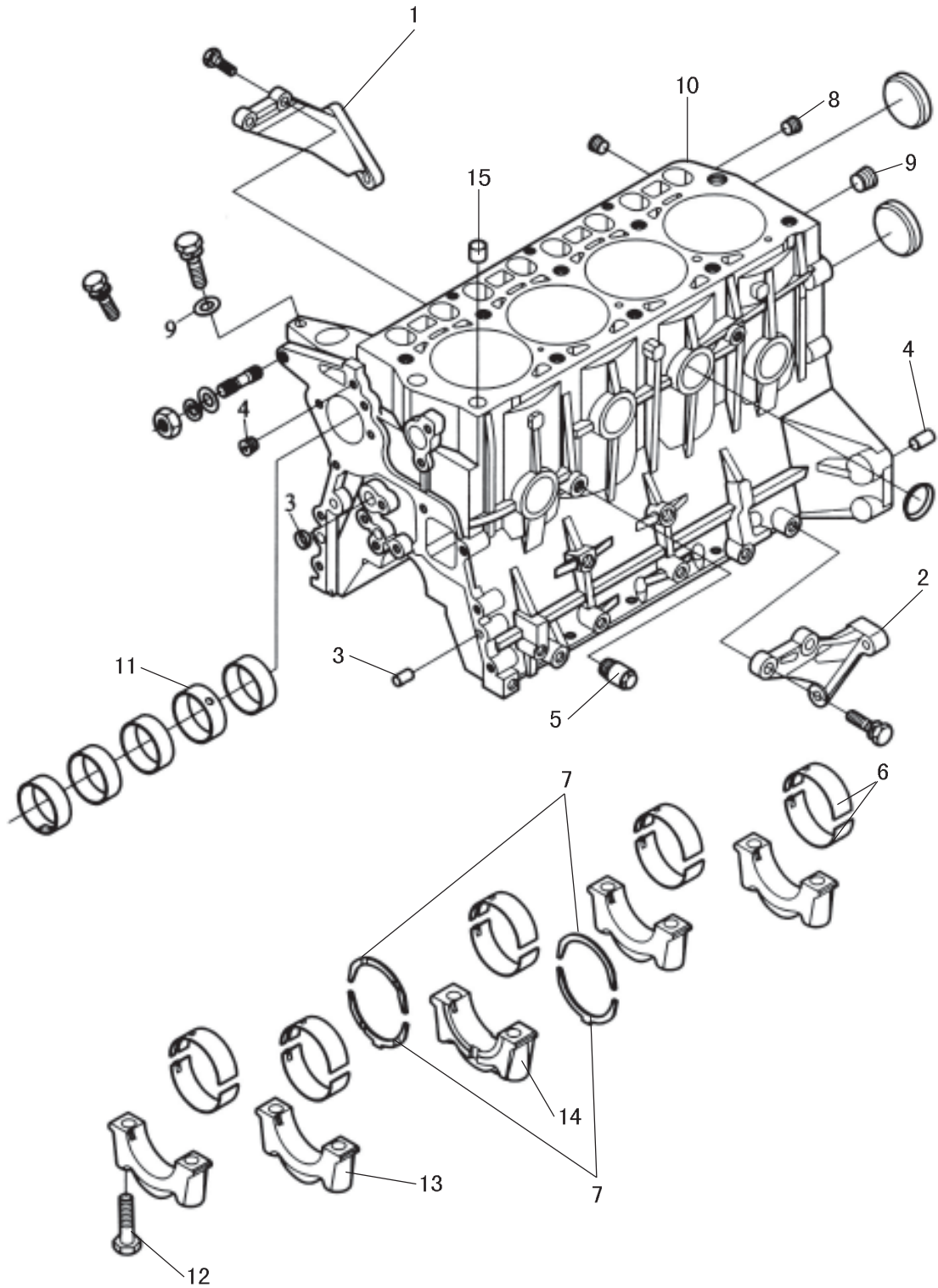
气缸盖总成 (一) CYLINDER HEAD ASSEMBLY(1)					
序号 S/N	零部件代号 PART CODE	零部件名称 PART NAME	用量 QTY	规格 SPECIFICATION	备注 REMARK
1	1014010-E00	PCV 阀组件 PCV VALVE SET	1		
2	GB/T923-1988	盖形螺母 CAP NUT	3		
3	1003050-E00	气门室盖固定螺栓垫组件 VALVE CHAMBER CAP FASTENING BOLT WASHER SET	3		
4	1003083-E00	加机油口盖 OIL FILLER CAP	1		
5	1003080-E00	气门室盖组件 VALVE CHAMBER CAP SET	1		
6	1003085-E00	气门室盖密封圈 VALVE CHAMBER CAP SEAL RING	1		
7	1007011-E00	摇臂轴固定螺栓 ROCKER ARM SHAFT FASTENING BOLT	3		
8	1007012-E00	气门摇臂 (一) AIR VALVE ROCKER ARM (I) (NO LOBE)	4		无凸起
9	1007013-E00	气门摇臂轴弹簧 AIR VALVE ROCKER ARM SHAFT SPRING	4		
10	1007014-E00	气门摇臂 (二) AIR VALVE ROCKER ARM (WITH LOBE)	4		有凸起
11	1007050-E00	气门摇臂轴组件 AIR VALVE ROCKER ARM SHAFT SET	1		
12	1003155-E00	缸盖后封水盖板垫片 CYLINDER HEAD BACK WATER SHUT-OFF COVER PLATE GASKET	1		
13	1003090A-E00	气缸垫组件 CYLINDER GASKET SET	1		
14	1003150-E00	缸盖后封水盖板 CYLINDER HEAD BACK WATER SHUT-OFF COVER PLATE	1		
15	1014017-E00	PCV 阀橡胶座 PCV VALVE RUBBER SEAT	1		
16	1014026-E00	曲轴箱通气胶管 CRANKCASE VENTILATING HOSE	1		

气缸盖总成 (二) CYLINDER HEAD ASSEMBLY(2)



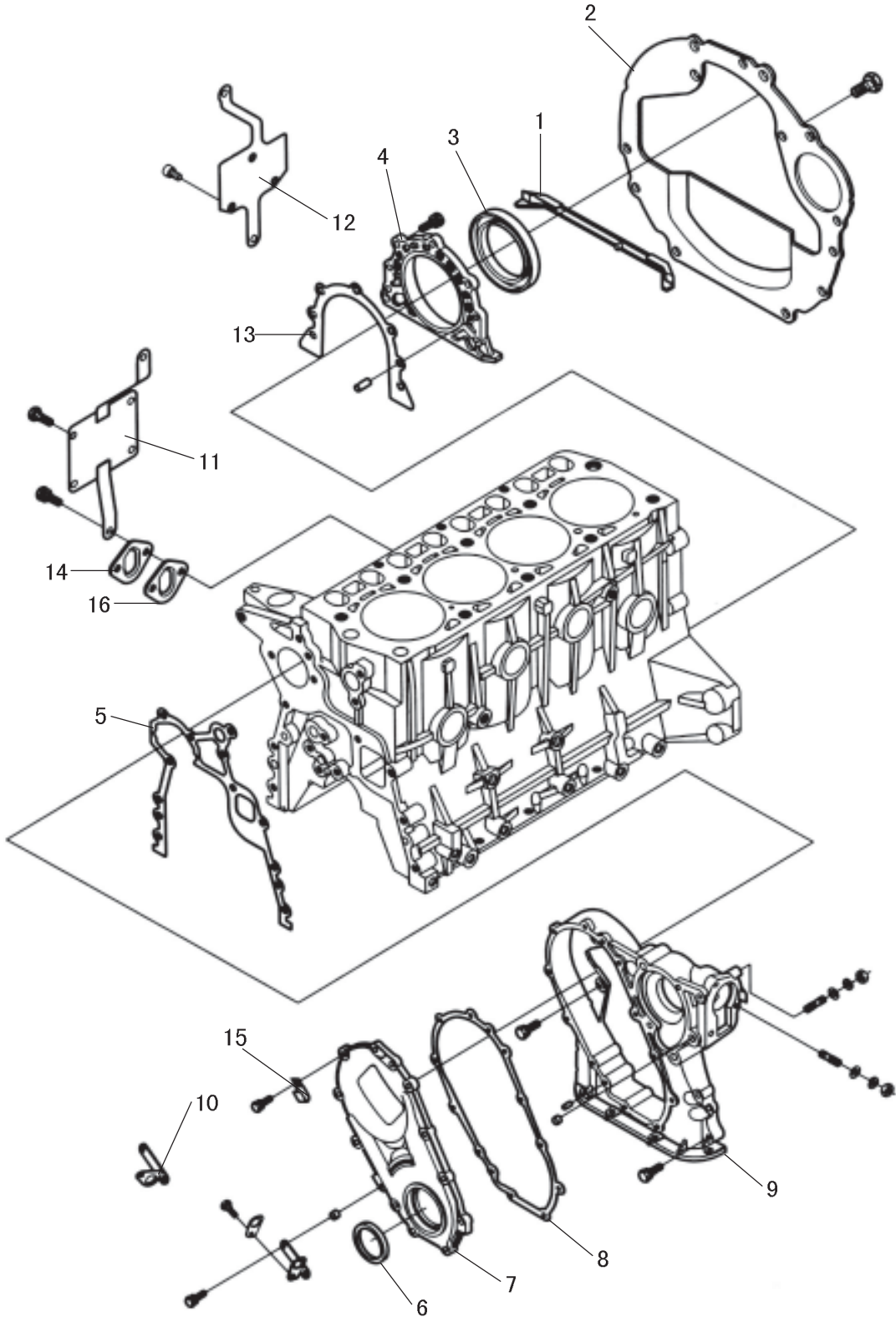
气缸盖总成 (二) CYLINDER HEAD ASSEMBLY(2)					
序号 S/N	零部件代号 PART CODE	零部件名称 PART NAME	用量 QTY	规格 SPECIFICATION	备注 REMARK
1	1003016-E00	缸盖螺栓 CYLINDER HEAD BOLT	10		
2	1003017-E00	缸盖螺栓垫圈 CYLINDER HEAD BOLT WASHER	10		
3	1007019-E00	气门锁夹 AIR VALVE LOCKER	16		
4	1007030-E00	排气门弹簧上座组件 OUTTAKE VALVE SPRING UPPER SEAT SET	4		
5	1007017-E00	气门弹簧 AIR VALVE SPING	8		
6	1007040A-E00	气门油封 AIR VALVE OIL SEAL	8		
7	1007015-E00	气门弹簧座垫 AIR VALVE SPRING SEAT GASKET	8		
8	1003102-E00	排气门导管 EXHAUST VALVE CONDUCT	4		
9	1007021-E00	进气门弹簧上座 INTAKE VALVE SPRING UPPER SEAT	4		
10	1003101-E00	进气门导管 INTAKE VALVE CONDUIT	4		
11	1003180-E00	温控真空开关阀Ⅲ THERMOSTATIC CONTROLLED VACUUM VALVE III	1		
12	1003011-E00	火花塞套 SPARKING PLUG SLEEVE	4		
13	1003012-E00	火花塞套密封垫 SPARKING PLUG SLEEVE SEAL RING	4		
14	1007016-E00	进气门 INTAKE VALVE	4		
15	1007018-E00	排气门 EXHAUST VALVE	4		
16	1003130-E00	真空分配器组件 VACUUM DISTRIBUTOR SET	1		
17	1003106-E00	气缸盖 CYLINDER HEAD	1		
18	1003013-E00	后吊钩 BACK HOOK	1		
19	1003018-E00	前吊钩 FRONT HOOK	1		
20	1008014-E00	进排气管双头螺柱 INLET/EXHAUST PIPE DOUBLE END BOLT	8		
21	1003110-E00	进排气管螺母垫圈组件 INLET/ EXHAUST PIPE NUT WASHER SET	8		

气缸体总成 (一) CYLINDER BLOCK ASSEMBLY(1)



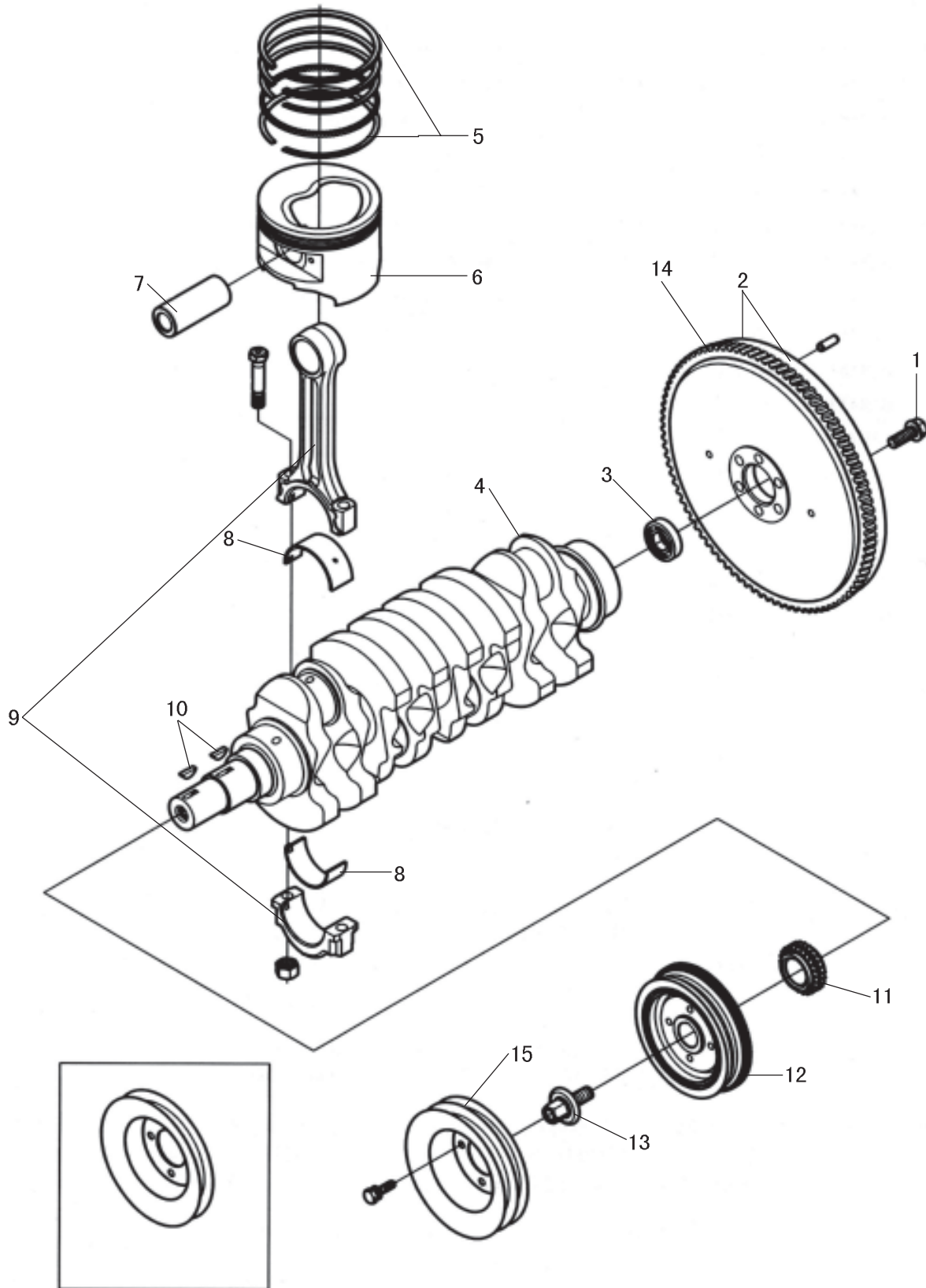
气缸体总成 (一) CYLINDER BLOCK ASSEMBLY(1)					
序号 S/N	零部件代号 PART CODE	零部件名称 PART NAME	用量 QTY	规格 SPECIFICATION	备注 REMARK
1	1002023-E00	离合器壳右支架 CLUTCH BOX RIGHT BRACKET	1		
2	1002024-E00	离合器壳左支架 CLUTCH BOX LEFT BRACKET	1		
3	GB/T119.1-2000	定位销 LOCATING PIN	4	B8×18	
4	GB/T119.1-2000	定位销 LOCATING PIN	2	B10×22	
5	1305010-E00	放水开关组件 WATER DRAIN SWITCH SET	1		
6	1002017-E07	下主轴瓦 LOWER MAIN BEARING SHELL	5/套 5/SET		
	1002018-E07	上主轴瓦 HIGHER MAIN BEARING SHELL	5/套 5/SET		
7	1002019-E00	上止推片 HIGHER THRUST PLATE	2		
	1002021-E00	下止推片 LOWER THRUST PLATE	2		
8	1002047-E00	尾油道螺塞 TAIL OIL DUCT PLUG	3		
9	1002048-E00	主油道螺塞 MAIN OIL DUCT PLUG	1		
10	1002031-E07	气缸体 CYLINDER BLOCK	1		
11	1002042-E00	凸轮轴轴承 I CAM SHAFT BEARING I	1 套		
	1002043-E00	凸轮轴轴承 II CAM SHAFT BEARING II			
	1002044-E00	凸轮轴轴承 III CAM SHAFT BEARING III			
	1002045-E00	凸轮轴轴承 IV CAM SHAFT BEARING IV			
	1002046-E00	凸轮轴轴承 V CAM SHAFT BEARING V			
12	1002037-E00	主轴承盖螺栓 MAIN BEARING CAP BOLT	10		
13	1002034-E00	主轴承盖 MAIN BEARING CAP	4		
14	1002035-E00	中间主轴承盖 MIDDLE MAIN BEARING CAP	1		
15	1002041-E00	缸盖定位销套 CYLINDER HEAD LOCATING PIN SLEEVE	2		

气缸体总成 (二) CYLINDER BLOCK ASSEMBLY(2)



气缸体总成 (二) CYLINDER BLOCK ASSEMBLY(2)					
序号 S/N	零部件代号 PART CODE	零部件名称 PART NAME	用量 QTY	规格 SPECIFICATION	备注 REMARK
1	1002014-E00	后油封座密封条 BACK OIL-SEALING SEAT SEALING STRIP	1		
2	1002015-E00	离合器壳隔板 CLUTCH HOUSING SEPERATING PLATE	1		
3	1002120-E00	曲轴后油封 CRANKSHAFT BACK OIL SEALING	1		
4	1002091-E00	后油封座 BACK OIL SEALING SEAT	1		
5	1002012-E00	链轮室垫 SPROCKET WHEEL CHAMBER GASKET	1		
6	1002140-E00	曲轴前油封组件 CRANK SHAFT FRONT OIL SEAL SET	1		
7	1002061-E00	链轮室盖 SPROCKET WHEEL CHAMBER COVER	1		
8	1002011-E00	链轮室盖垫 SPROCKET WHEEL CHAMBER COVER GASKET	1		
9	1002051-E00	链轮室 SPROCKET WHEEL CHAMBER	1		
10	3609401-E01	曲轴位置传感器支架 CARNK POSITION SENSOR BASE FRAME	1		德尔福 DPLPHI
	3609401U-E01	转速传感器支架 SPEED SENSOR BASE FRAME	1		联合电子 UAES
11	3705101U-E01	点火线圈支架 IGNITION COIL BASE FRAME	1		联合电子 UAES
12	3705101-E01	点火线圈支架 IGNITION COIL BASE FRAME	1		德尔福 DELPHI
13	1002016-E00	后油封座垫 BACK OIL SEALING SEAT GASKET	1		
14	1002010-E01	汽油泵孔盖板 GASOLINE PUMP HOLE CAP	1		
15	3609403-E01	转速传感器线卡 SPEED SENSOR HARNESS CLAMP	3		
16	1002206-E01	汽油泵孔盖板垫片 GASOLINE PUMP HOLE CAP GASKET			

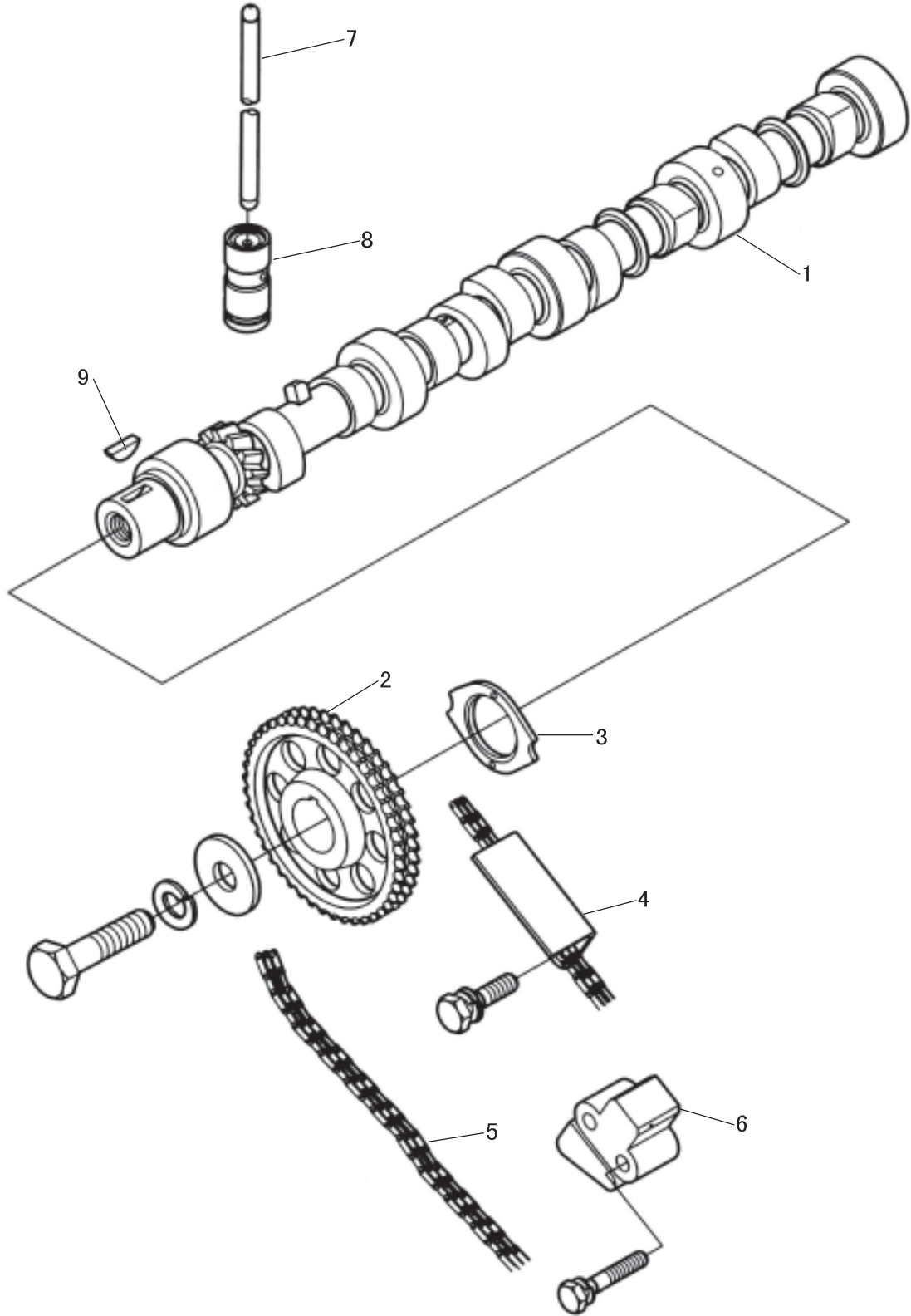
曲轴飞轮和活塞连杆总成 CRANK SHAFT FLYING WHEEL AND PISTON CNNECTING ROD ASSEMBLY



曲轴飞轮和活塞连杆总成 CRANK SHAFT FLYING WHEEL AND PISTON CNNECTING ROD ASSEMBLY

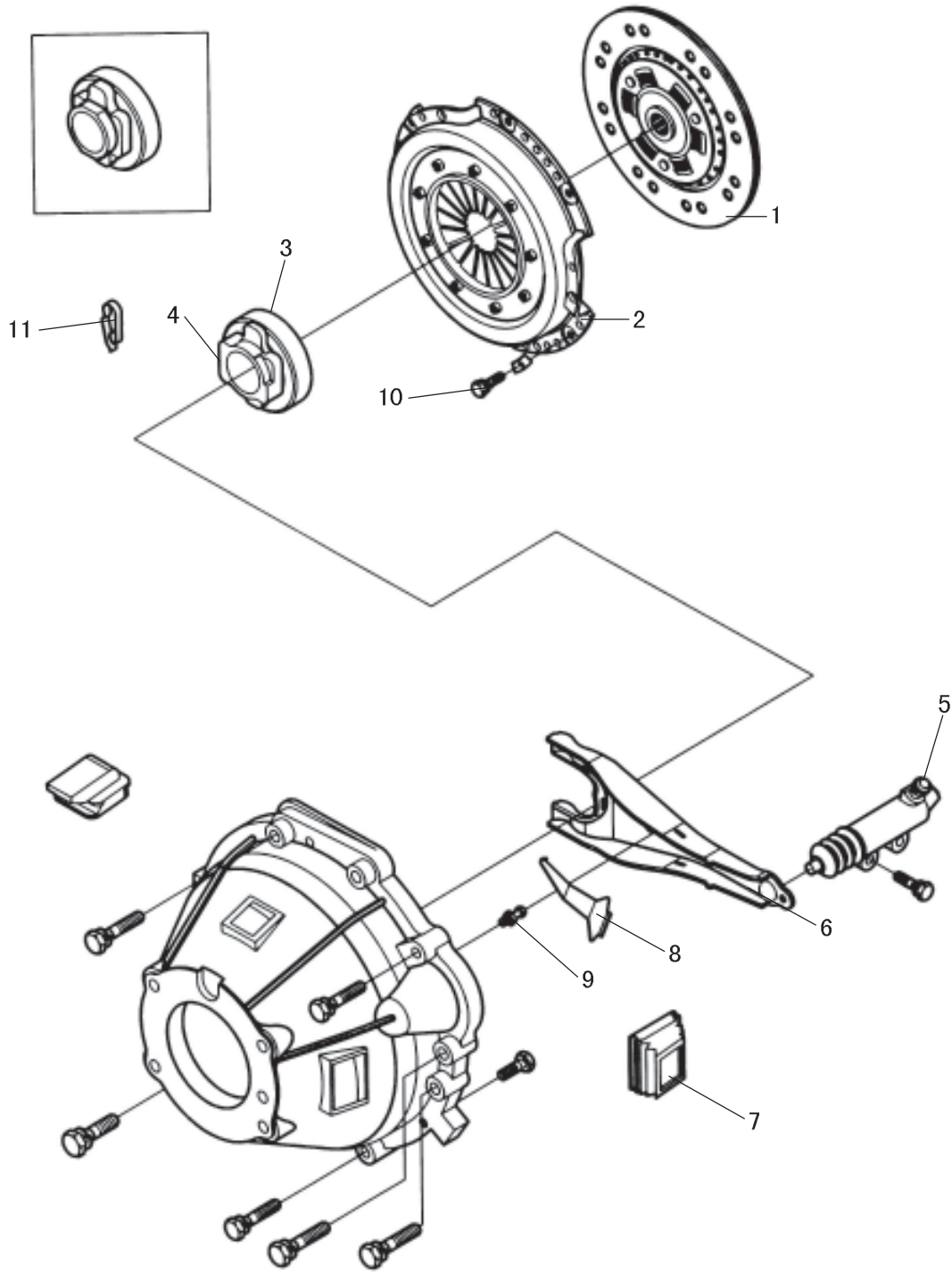
序号 S/N	零部件代号 PART CODE	零部件名称 PART NAME	用量 QTY	规格 SPECIFICATION	备注 REMARK
1	1005016-E00	飞轮螺栓 FLYING WHEEL BOLT	6		
2	1005030-E00	飞轮齿圈总成 FLYING WHEEL AND GEAR RIM SET	1		
	1005030A-E00	飞轮齿圈总成 FLYING WHEEL AND GEAR RIM SET	1		四驱 4WD
3	GB/T276-1994	轴承 BEARING	1	6201E-2RS	
4	1005015-E00	曲轴 CRANK SHAFT	1		
5	1004100-E01	活塞环 (STD) PISTON RING (STD)	4		
6	1004015-E00	活塞 PISTON	4		
7	1004016-E00	活塞销 PISTON PIN	4		
8	1004023-E07	连杆轴瓦 CONNECTING ROD BUSH	4		
9	1004020-E00	连杆组件 CONNECTING ROD SET	4		
10	GB/T1099.1-2003	半圆键 WOODRUFF KEY	2	5×7.5×19	
11	1005012-E00	曲轴正时链轮 CRANK SHAFT TIMING SPROKET WHEEL	1		
12	1005020-E00	减震皮带轮组件 DAMPING BELT PULLEY SET	1		
13	1005011-E00	曲轴皮带轮螺栓 DAMPING BELT PULLEY BOLT	1		
14	1005032-E00	齿圈 GERA RIM	1		
15	1005040A-E01	空调机及转向泵皮带轮 AIR-CONDITIONING AND STEERING PUMP PULLEY	1		

凸轮轴总成CAM SHAFT ASSEMBLY



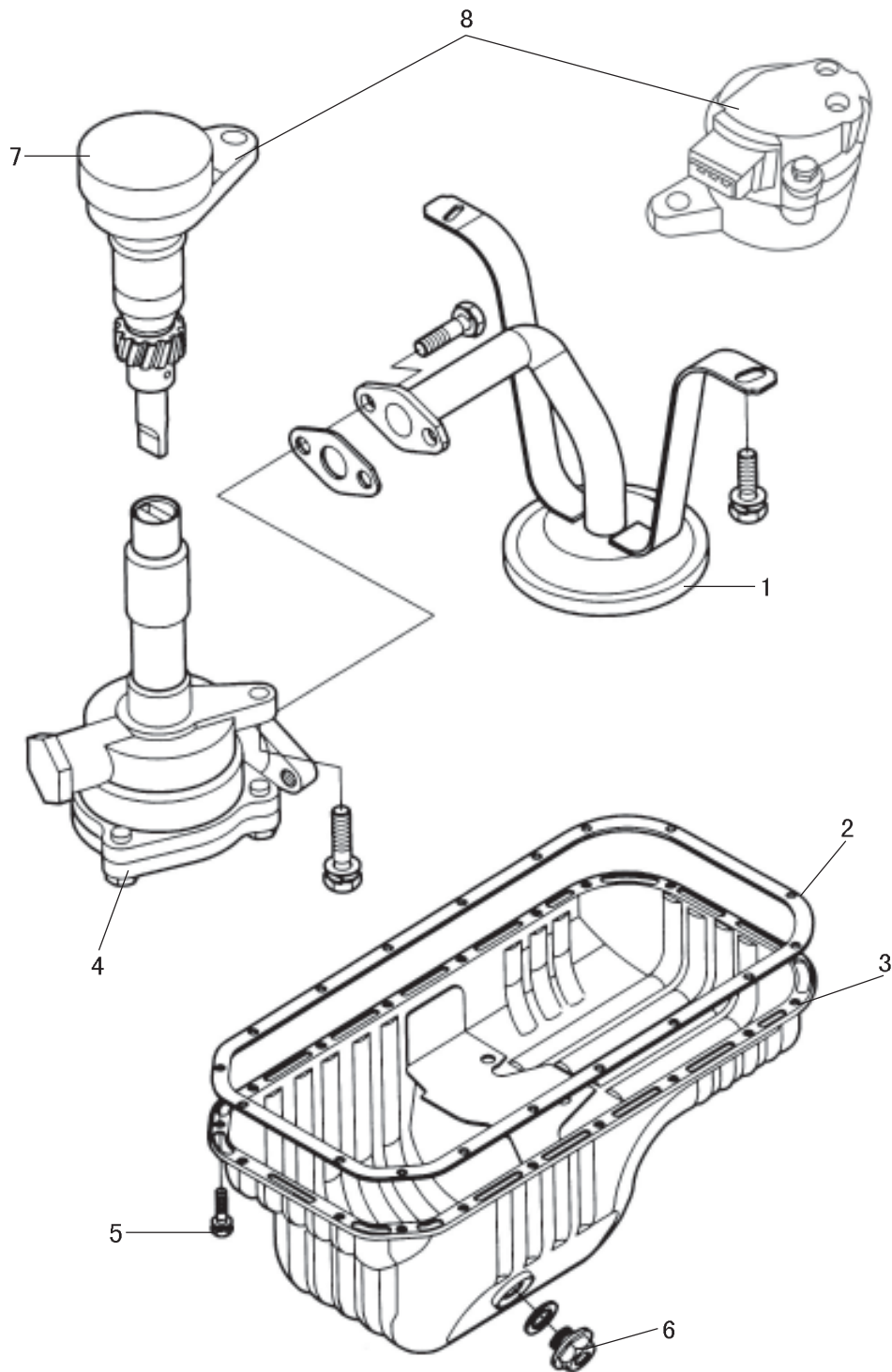
凸轮轴总成CAM SHAFT ASSEMBLY					
序号 S/N	零部件代号 PART CODE	零部件名称 PART NAME	用量 QTY	规格 SPECIFICATION	备注 REMARK
1	1006015-E00	凸轮轴 CAM SHAFT	1		
2	1006012-E00	凸轮轴正时链轮 CAM SHAFT TIMING SPROKET WHEEL	1		
3	1006011-E00	凸轮轴止推盘 CAM SHAFT THRUST PLATE	1		
4	1006020-E00	链条阻尼器组件 CHAIN DAMPER SET	1		
5	1006040-E00	正时链条 TIMING CHAIN	1		
6	1006030-E00	紧链器组件 CHAIN SPANNER SET	1		
7	1007080-E00	推杆组件 THRUSTING ROD SET	8		
8	1007070-E00	挺柱组件 TAPPET SET	8		
9	GB/T1099.1-2003	半圆键 WOODRUFF KEY	1	5×7.5×19	

离合器总成 CLUTCH COMPLING ASSEMBLY



离合器总成CLUTCH COMPLING ASSEMBLY					
序号 S/N	零部件代号 PART CODE	零部件名称 PART NAME	用量 QTY	规格 SPECIFICATION	备注 REMARK
1	1601050-E00	离合器从动盘总成 CLUTCH DRIVEN DISK ASSEMBLY	1		
2	1601020-E00	离合器压盘总成 CLUTCH PRESSURE PLATE ASSEMBLY	1		
3	1602110-E00	分离轴承组件 RELEASE BEARING SET	1		
4	1602101-E00	分离套筒 RELEASE SLEEVE	1		
5	1602080C-E00	离合器分离工作缸组件 CLUTCH RELEASE CYLINDER SET	1	M10×1	
6	1602024-E00	分离叉 RELEASE FORK	1		
7	1602025-E00	分离叉护罩 RELEASE FORK SHEATHING	1		
8	1602027-E00	分离叉固定夹 RELEASE FORK FASTENING CLAMP	1		
9	1602026-E00	分离叉球头支座 RELEASE FORK BALL-END SUPPORT	1		
10	1601022-E00	离合器压盘组件螺栓 CLUTCH PRESSURE PLATE BOLT	6		
11	1602028-E00	分离套筒夹 RELEASE SLEEVE CLIP	1		

机油泵、机油集滤器和机油盘总成 OIL PUMP, OIL SUCTION FILTER AND OIL PAN ASSEMBLY

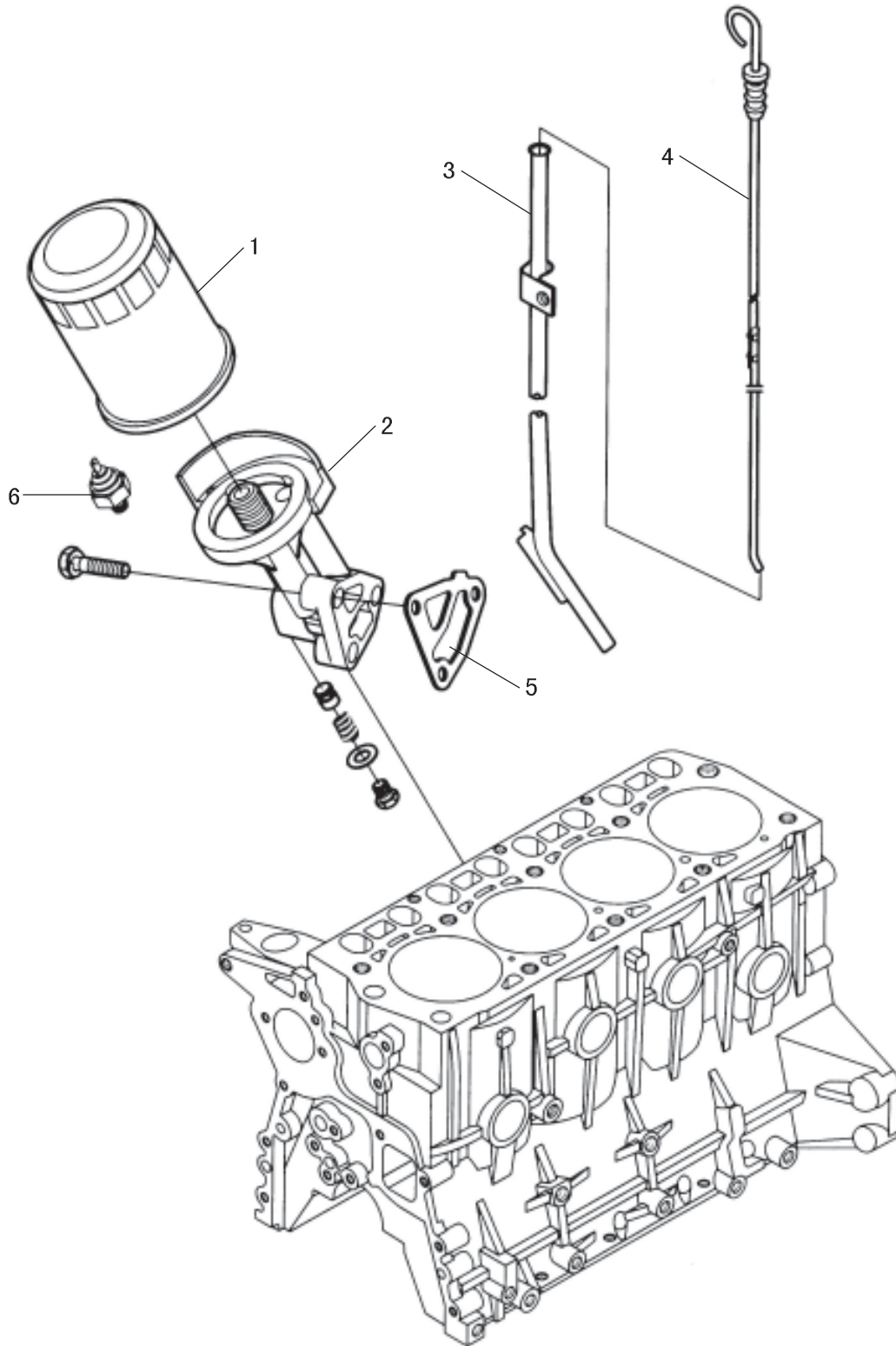


机油泵、机油集滤器和机油盘总成

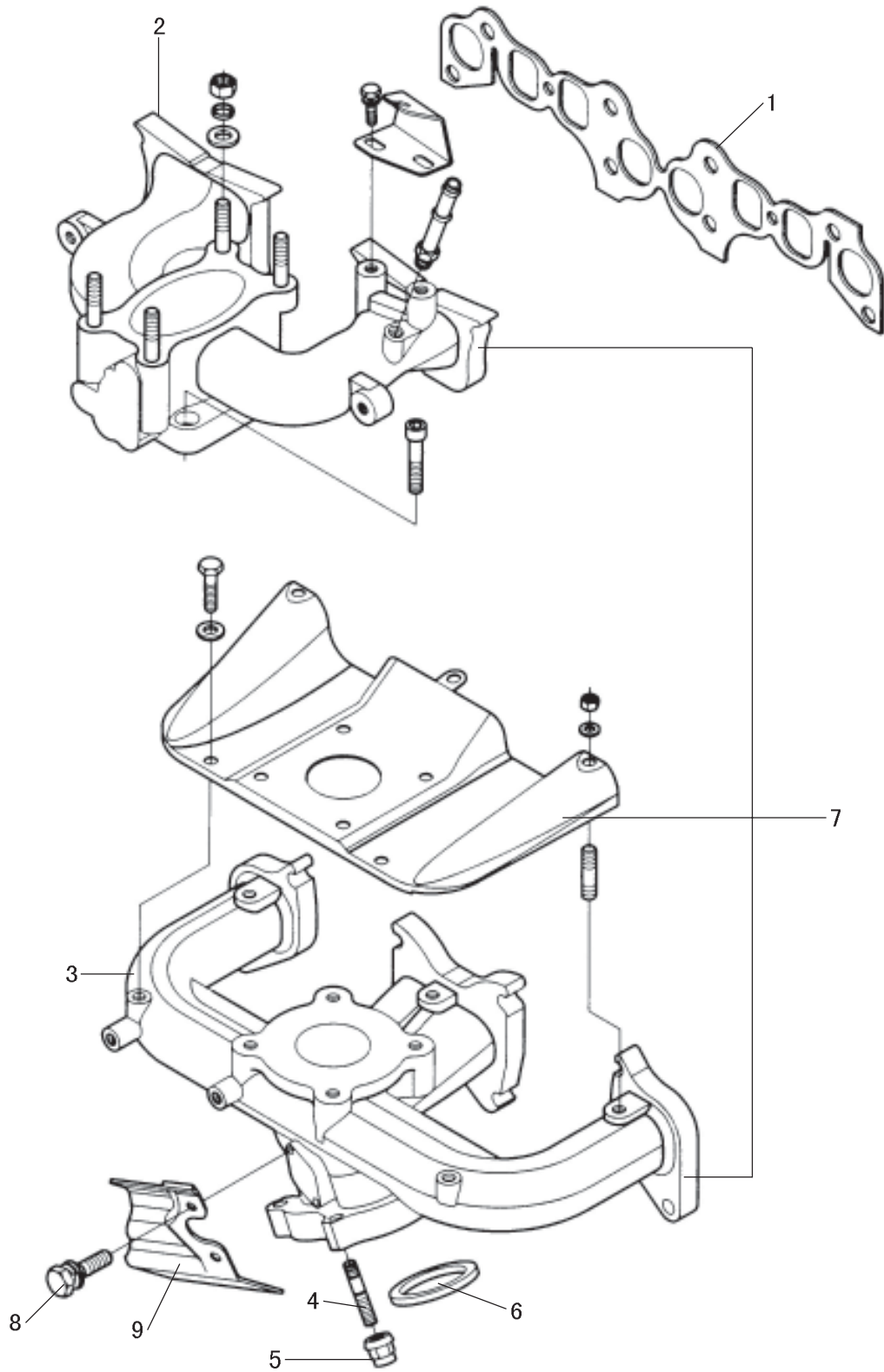
OIL PUMP, OIL SUCTION FILTER AND OIL PAN ASSEMBLY

序号 S/N	零部件代号 PART CODE	零部件名称 PART NAME	用量 QTY	规格 SPECIFICATION	备注 REMARK
1	1010010-E00	机油集滤器组件 OIL SUCTION FILTER SET	1		
	1010010A-E00	机油集滤器组件（四驱） OIL SUCTION FILTER SET (4 WD)	1		
2	1009011-E00	机油盘衬垫 OIL PAN GASKET	1		
3	1009020-E00	机油盘焊接组件 OIL PAN WELDING SET	1		
4	1011020-E00	机油泵组件 OIL PUMP SET	1		
5	GB/T5783-2000	螺栓 BOLT	18	M8×16	
6	1009012-E00	机油盘放油塞 OIL PAN DRAINAGE PLUG	1		
7	3609200-E01	机油泵传动轴组件 OIL PUMP DRIVE SHAFT ASSEMBLY	1		德尔福 DELPHI
8	3609200U-E01	相位传感器及机油泵传动轴组件 PHASE SENSOR AND OIL PUMP DRIVE SHAFT ASSEMBLY	1		联合电子 UNION ELECTICS

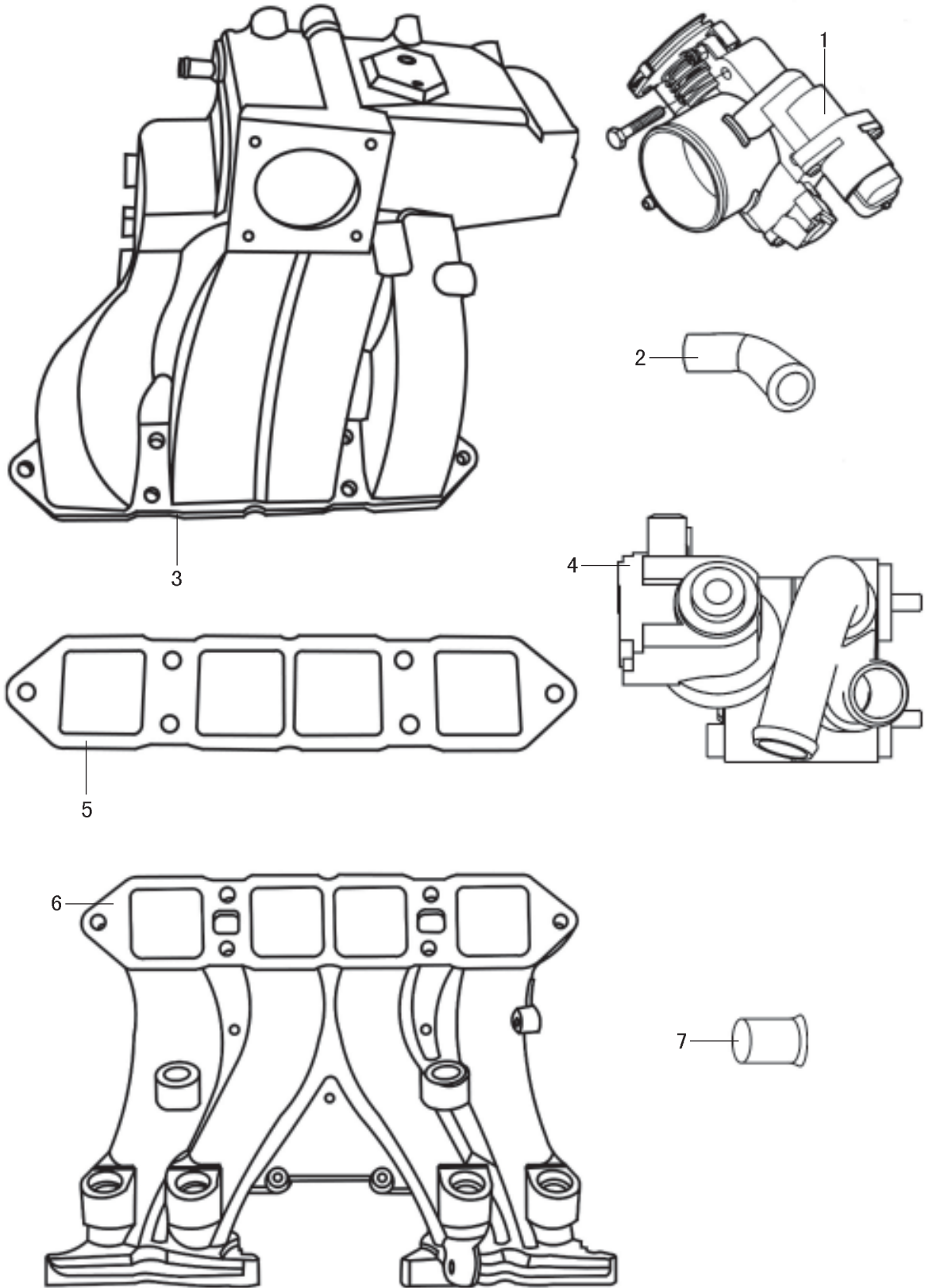
机油尺和机油滤清器总成 OIL LEVEL GAUGE AND OIL FILTER ASSEMBLY



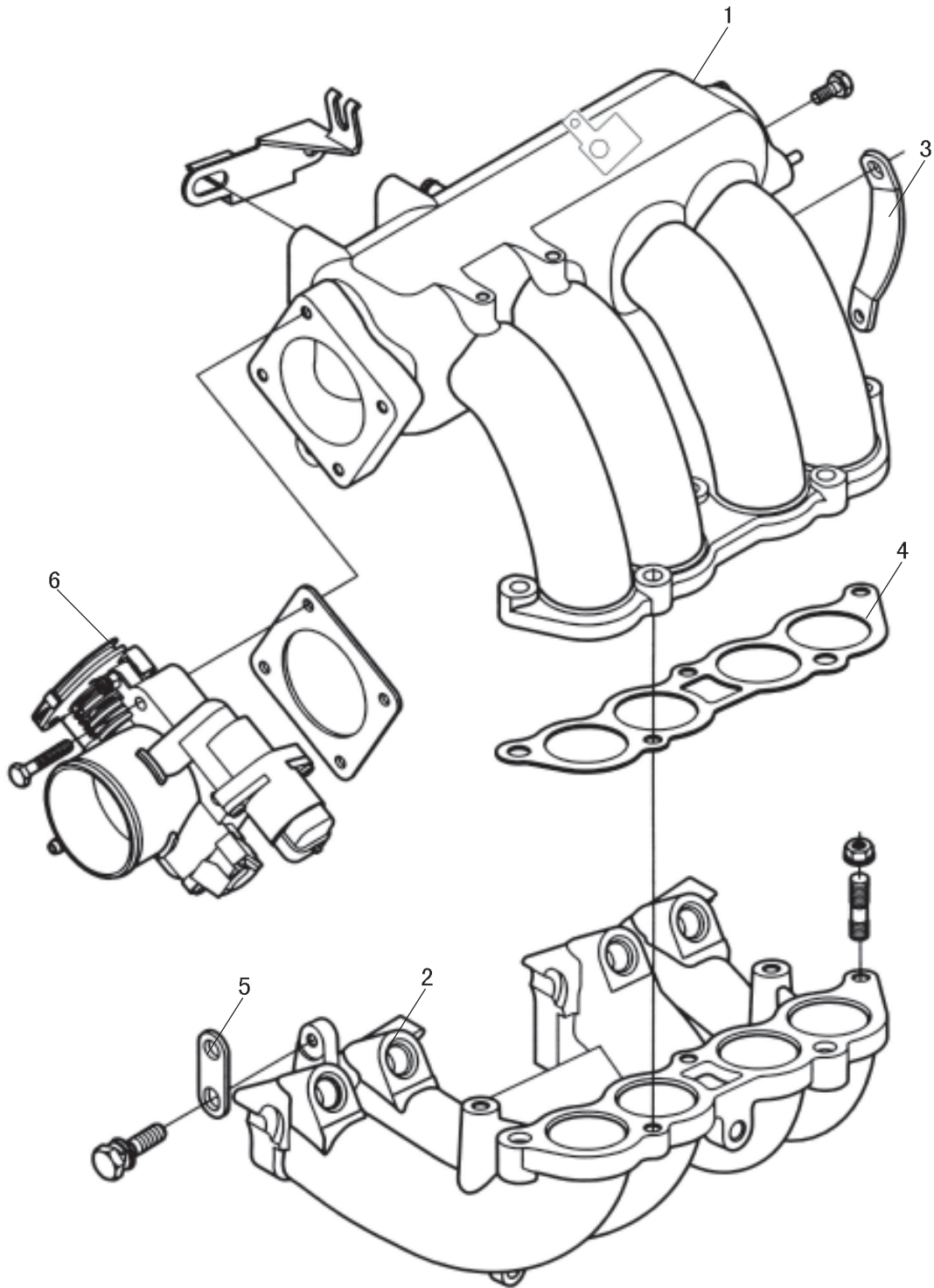
化油器汽油机进排气系统 CARBURETOR GASOLINE ENGINE INLET/OUTLET SYSTEM



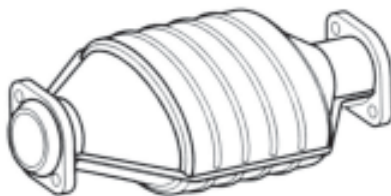
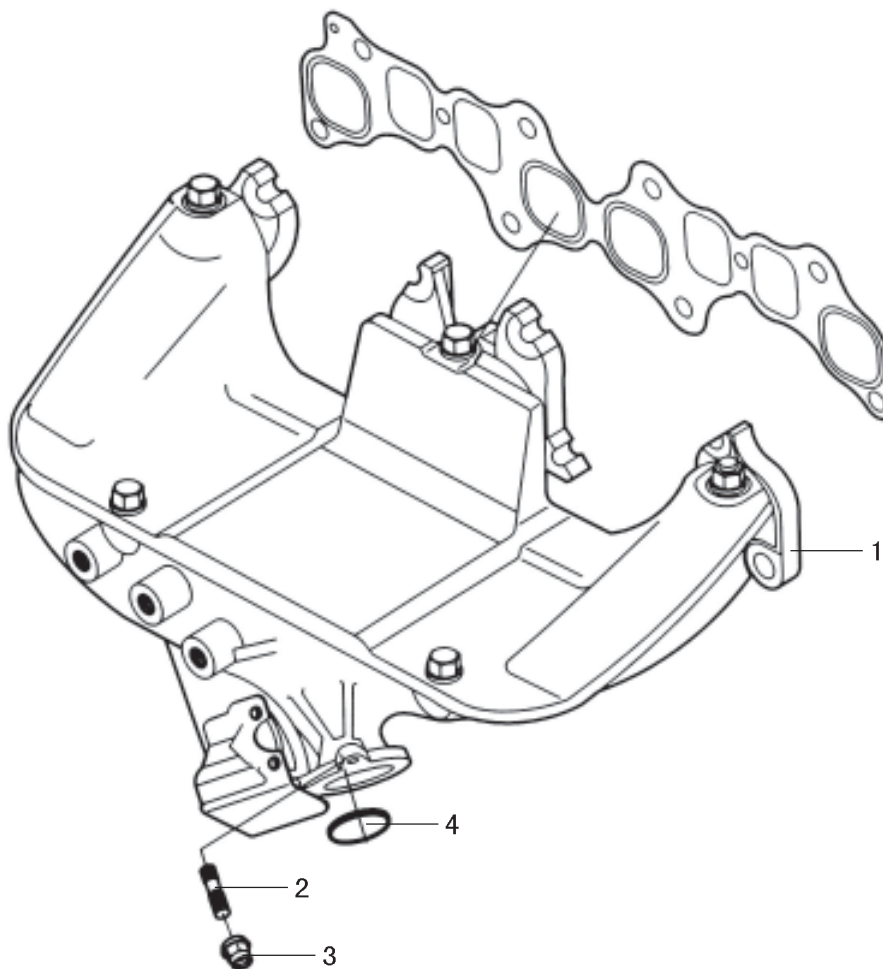
联合电子多点电喷汽油机进气系统 UNION ELECTRONICS Co., Ltd
MULTI POINT ELECTRIC INJECTION GASOLINE ENGINE AIR IN-
TAKE SYSTEM



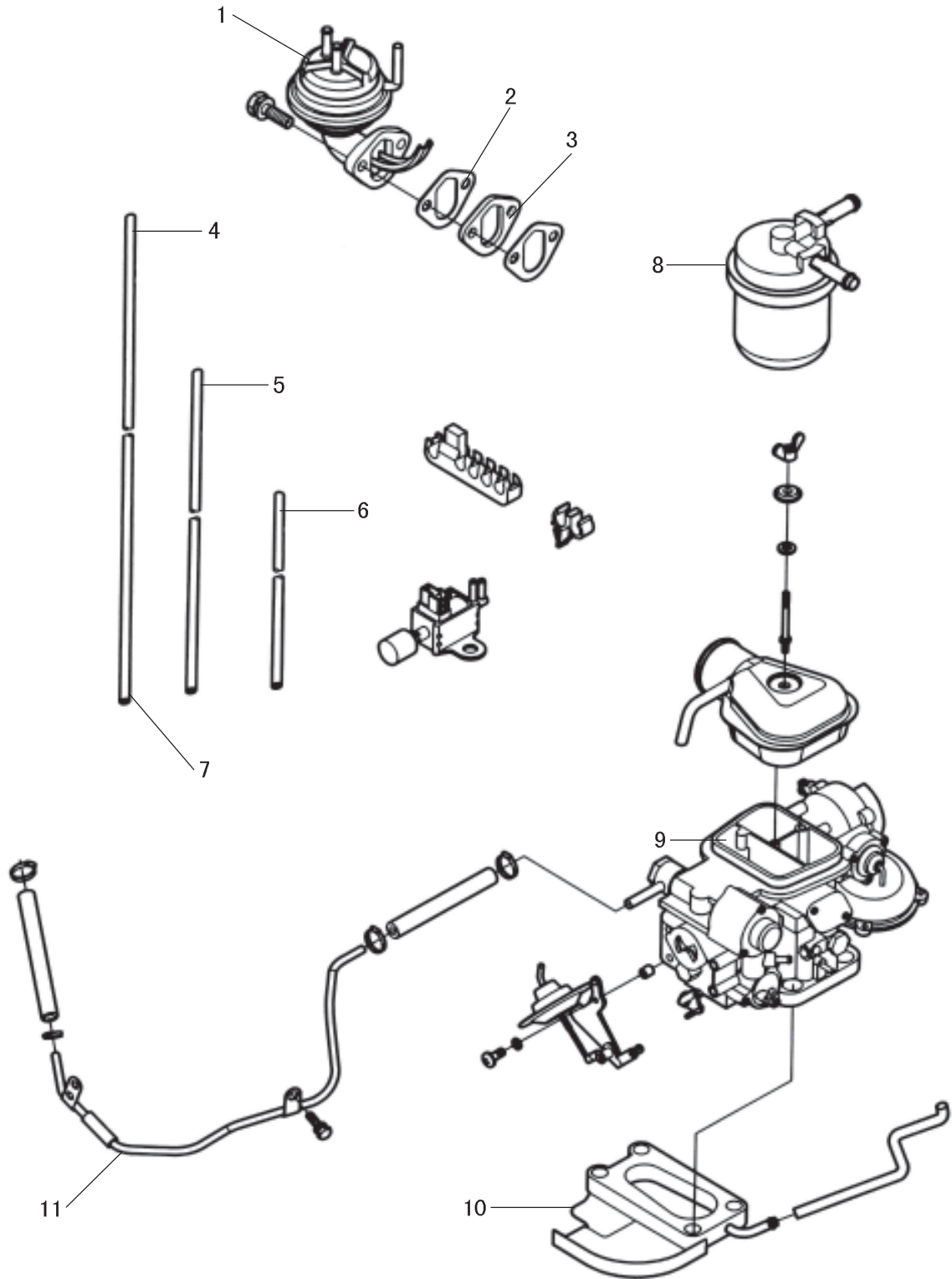
德尔福多点电喷汽油机进气系统 DELPHI MULTI POINT ELECTRIC INJECTION GASOLINE ENGINE AIR INTAKE SYSTEM



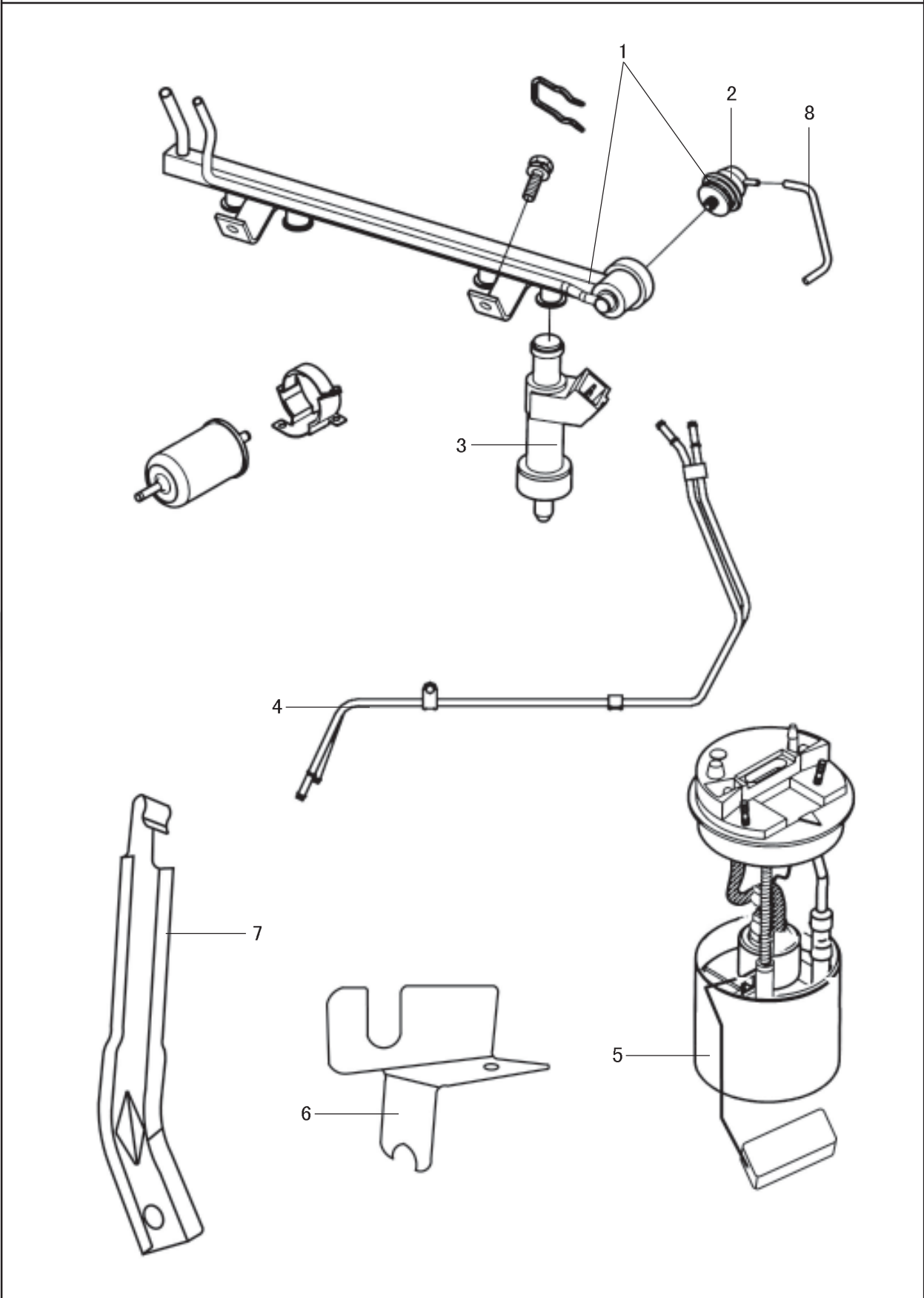
多点电喷汽油机排气系统 MULITI POINT ELECTRIC INJECTION GASOLINE ENGINE EXHAUST SYSTEM



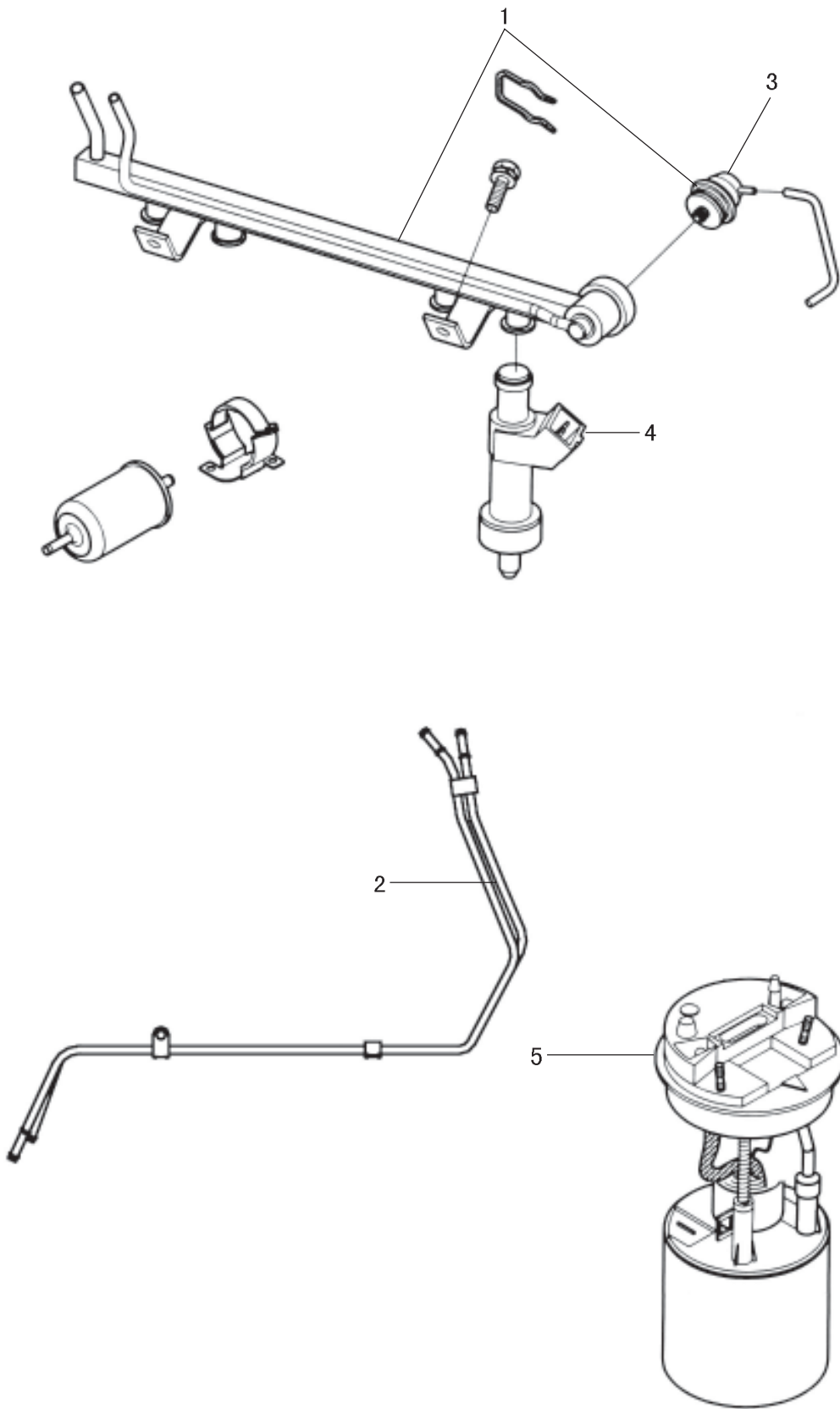
化油器汽油机供油系统 CARBURETTOR GASOLINE ENGINE FUEL FEEDING SYSTEM



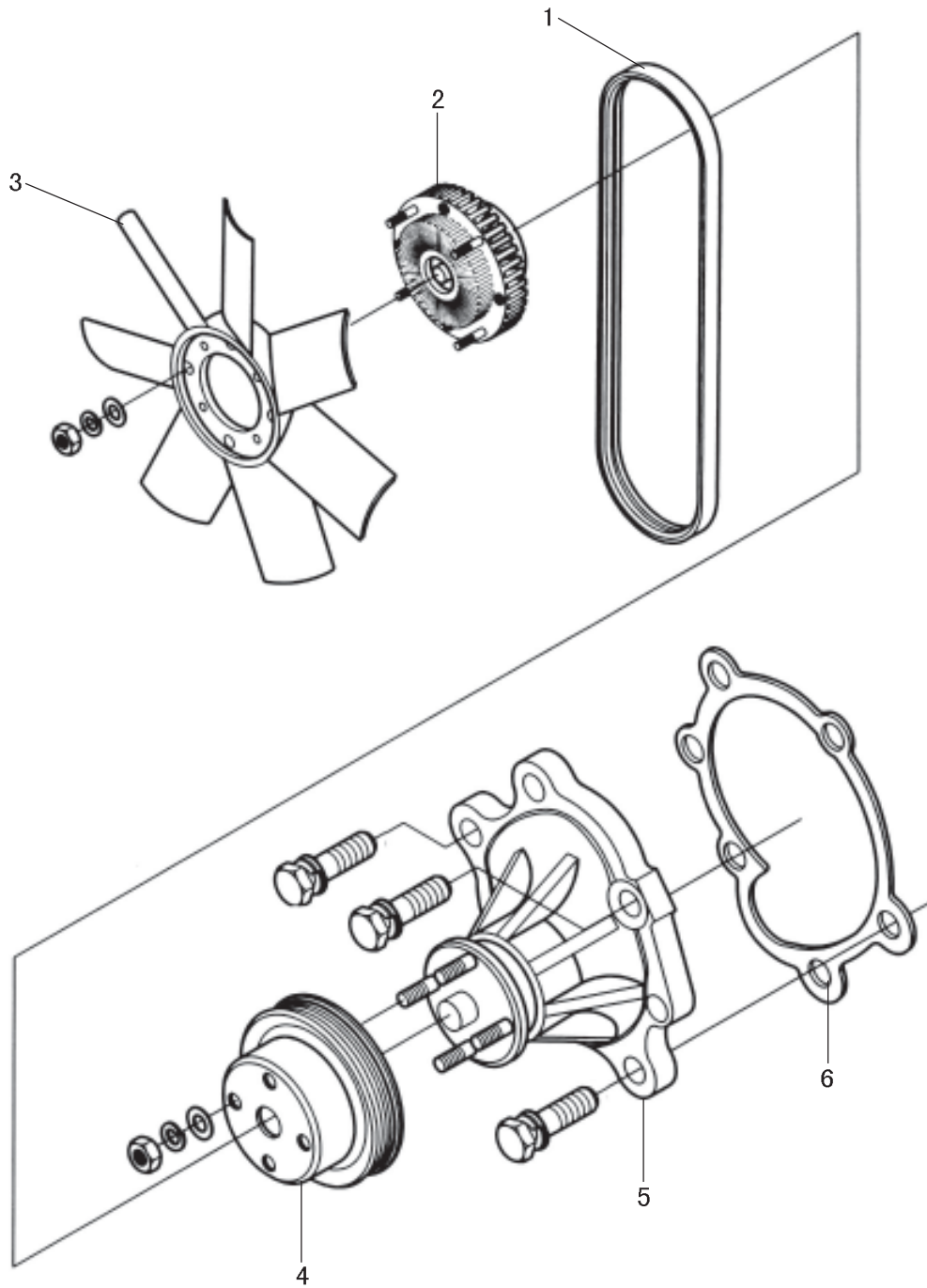
联合电子多点电喷汽油机供油系统 UNION ELECTRONICS Co., Ltd
MULTIPOINT ELECTRONIC INJECTION GASOLINE ENGINE FUEL
FEEDING SYSTEM



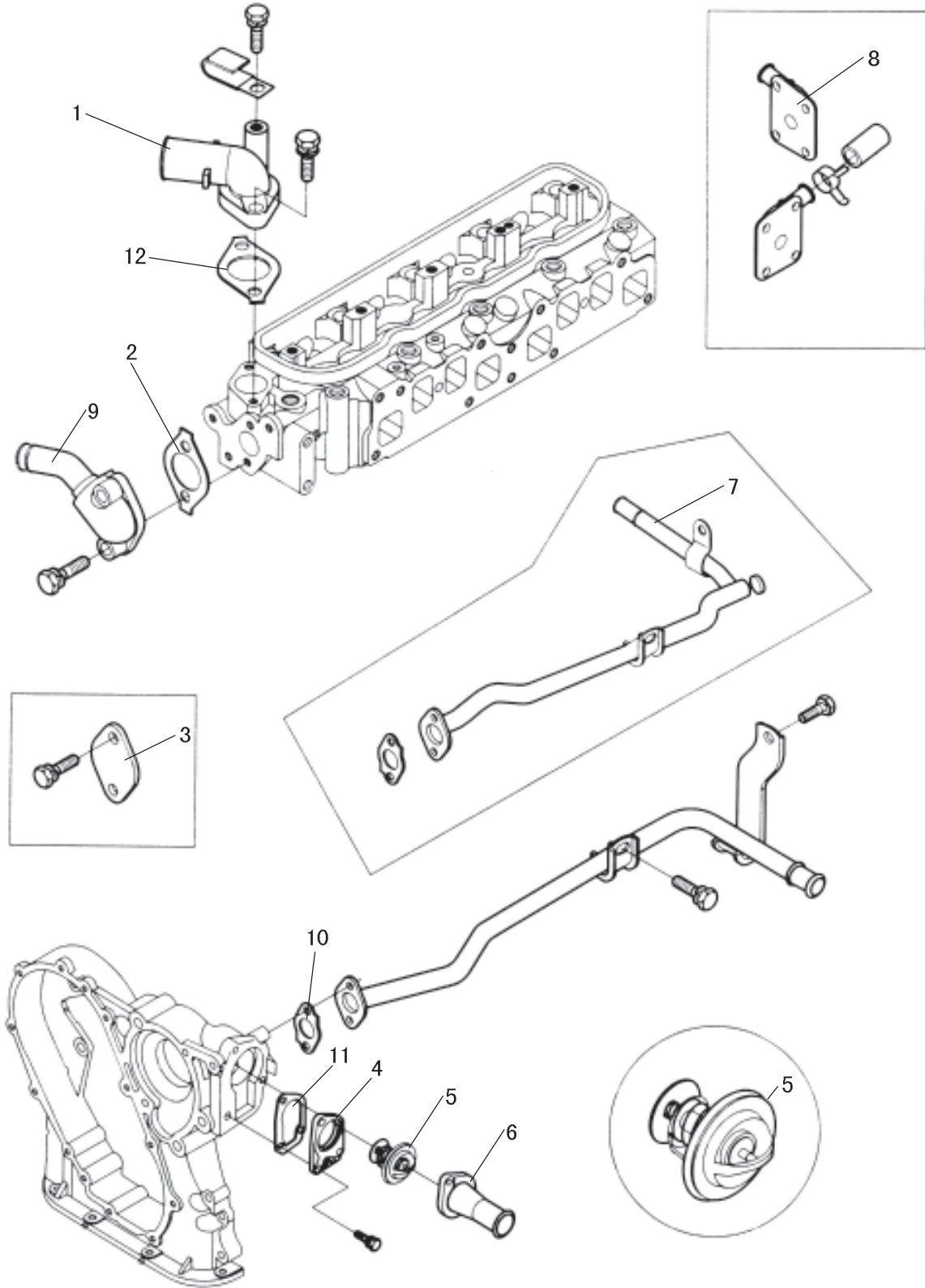
德尔福多点电喷汽油机供油系统 DELPHI MULTI POINT INJECTION GASOLINE ENGINE FUEL FEEDING SYSTEM



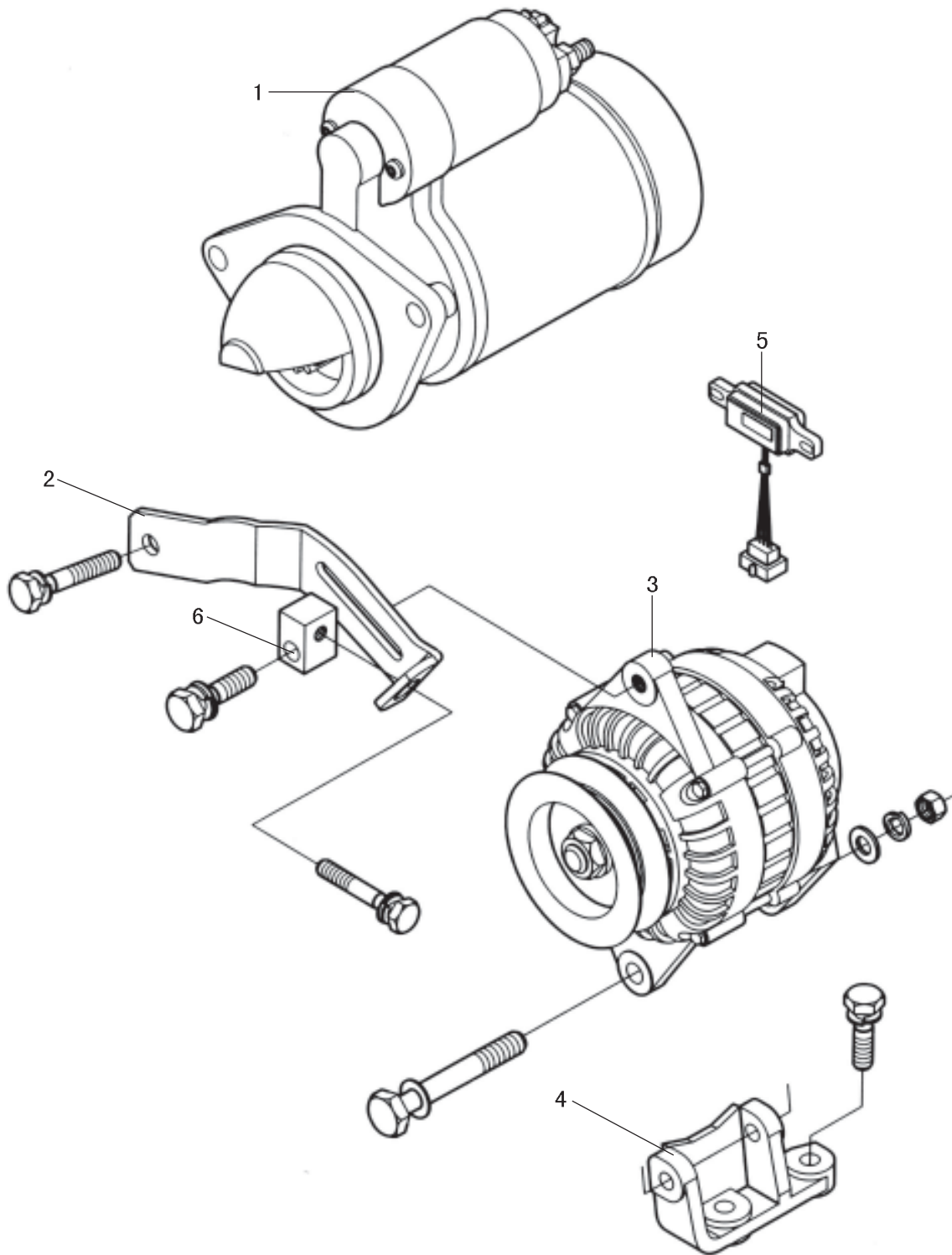
冷却系统 (一) COOLING SYSTEM (1)



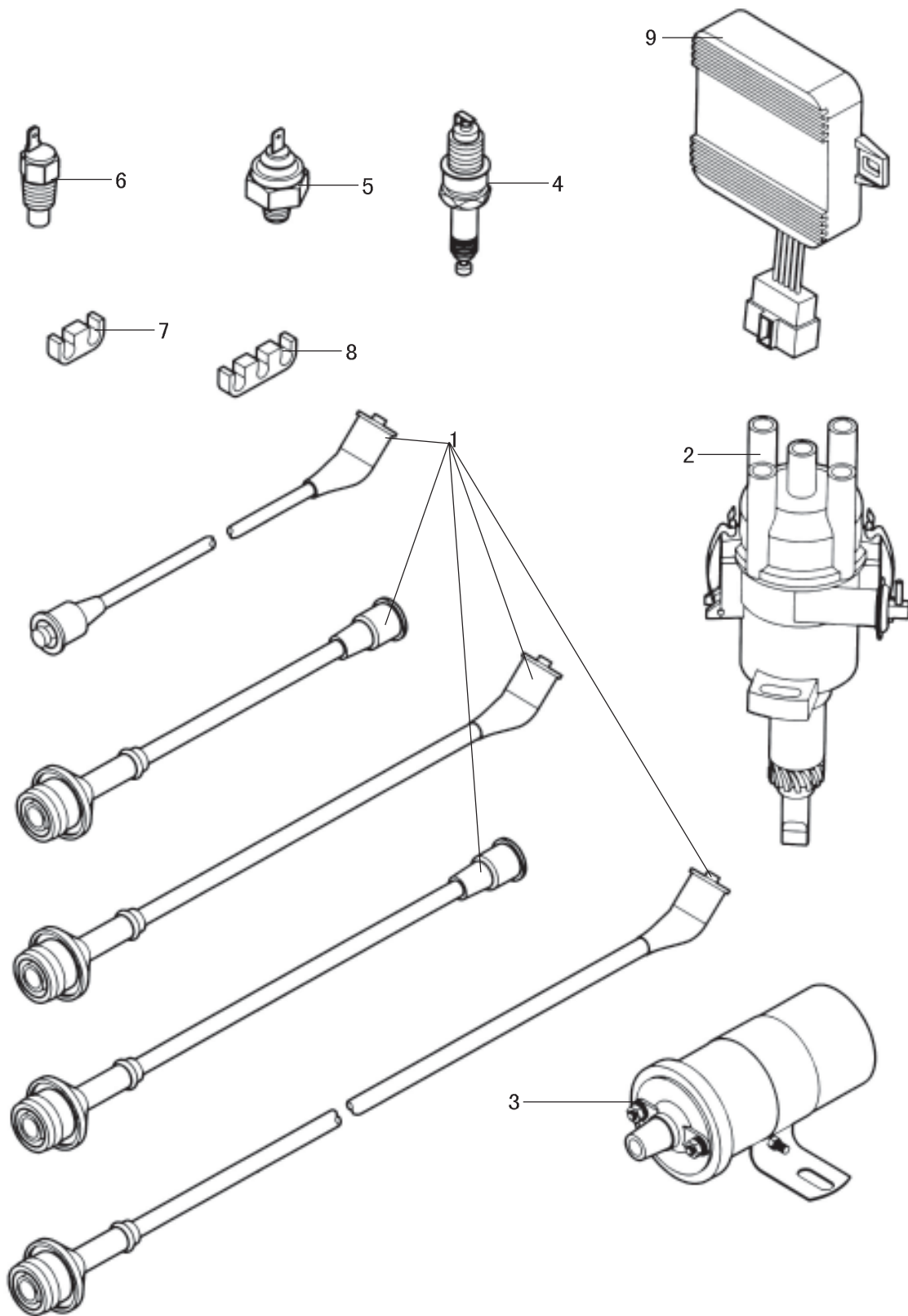
冷却系统 (二) COOLING SYSTEM (2)



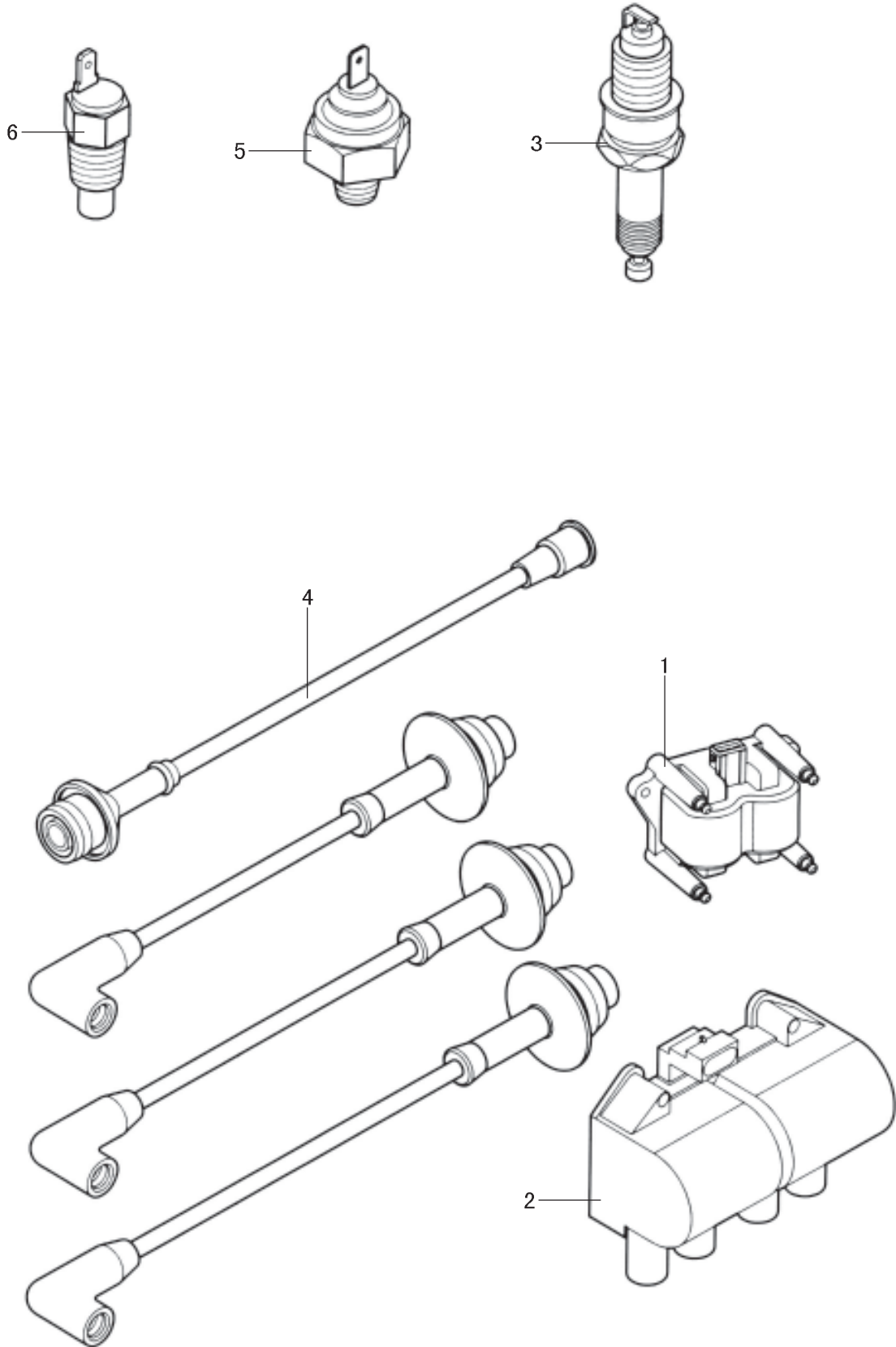
起动机和交流发电机总成 STARTER AND ALTERNATOR ASSEMBLY



化油器汽油机电气系统 CARBURETTOR GASOLINE ENGINE ELECTRICAL SYSTEM

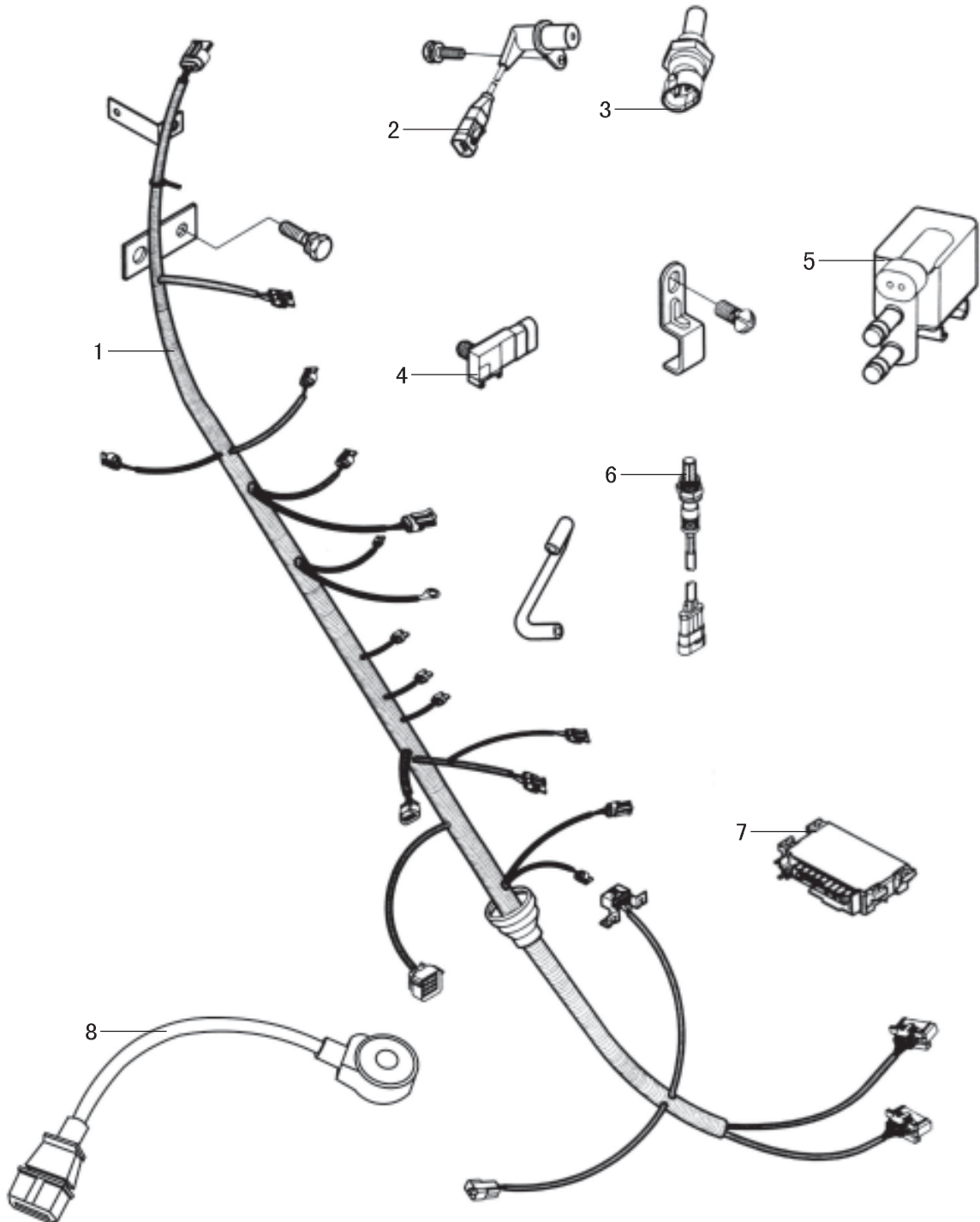


电喷汽油机电气系统 CARBURETTOR GASOLINE ENGINE ELECTRICAL SYSTEM

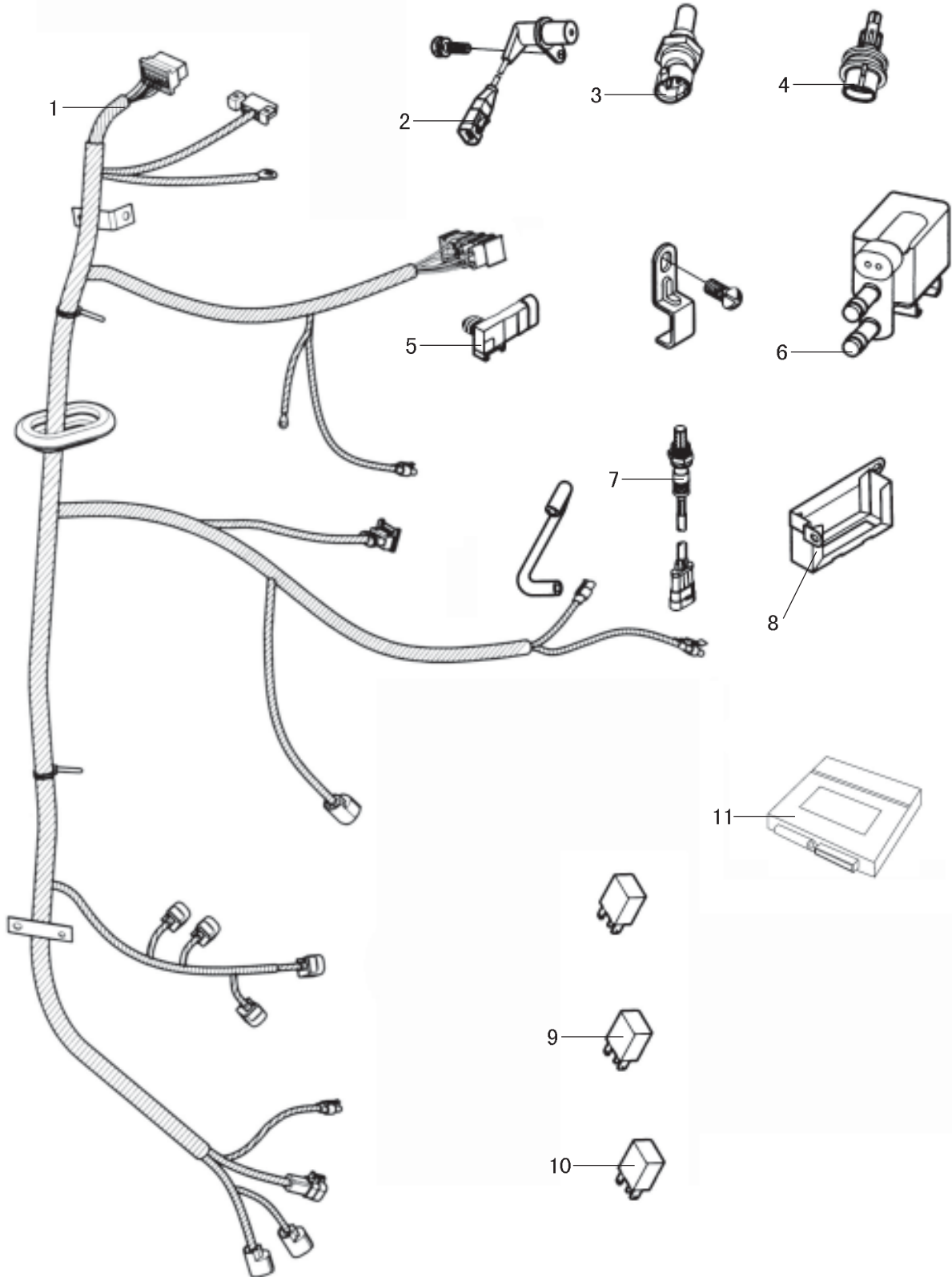


联合电子多点电喷汽油机电喷系统

ELECTRIC INJECTION GASOLINE ENGINE ELECTRICAL SYSTEM



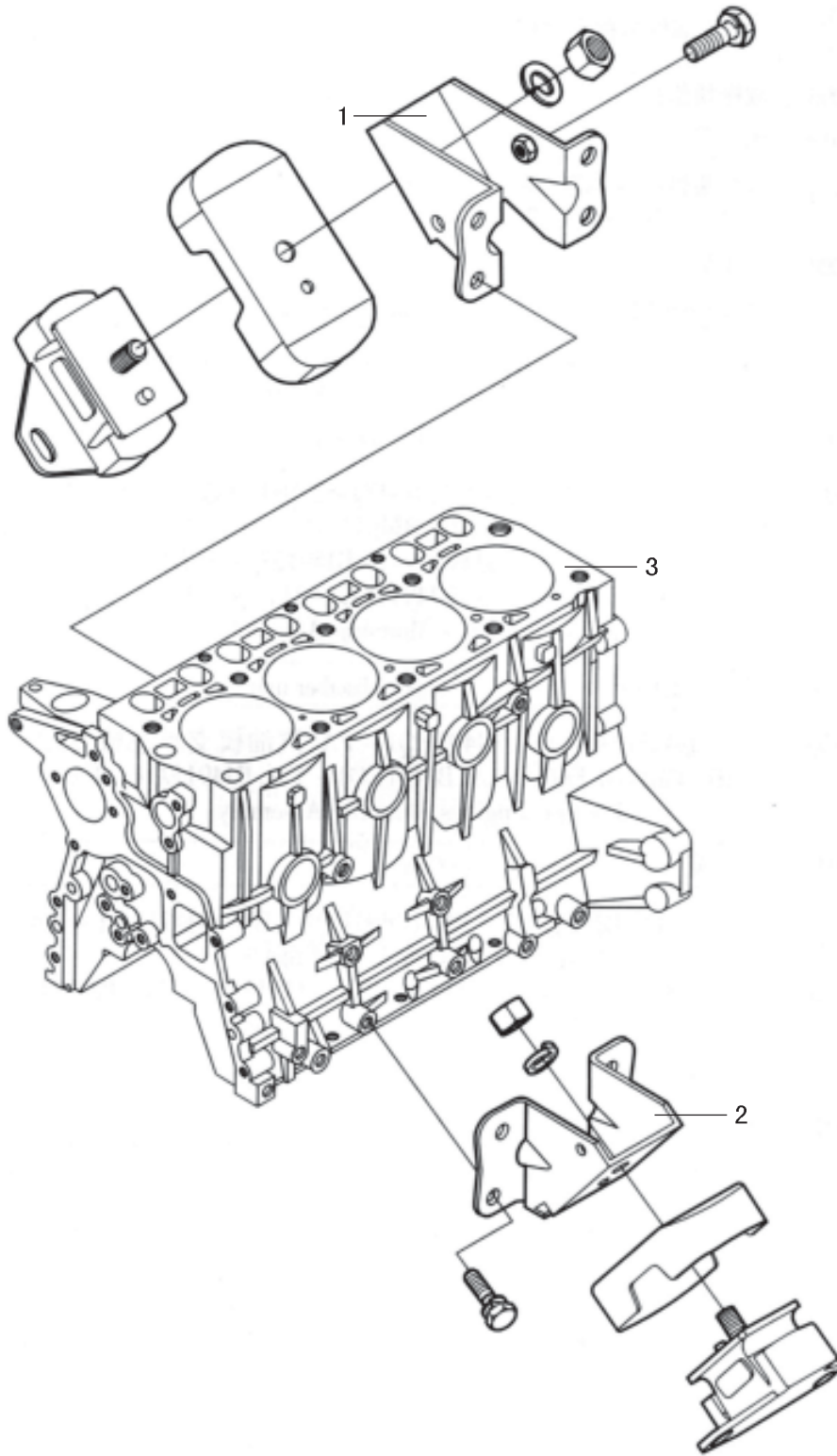
德尔福多点电喷汽油机电喷系统 DELPHI GASOLINE ENGINE MULTIPOINT ELECTRIC INJECTION SYSTEM



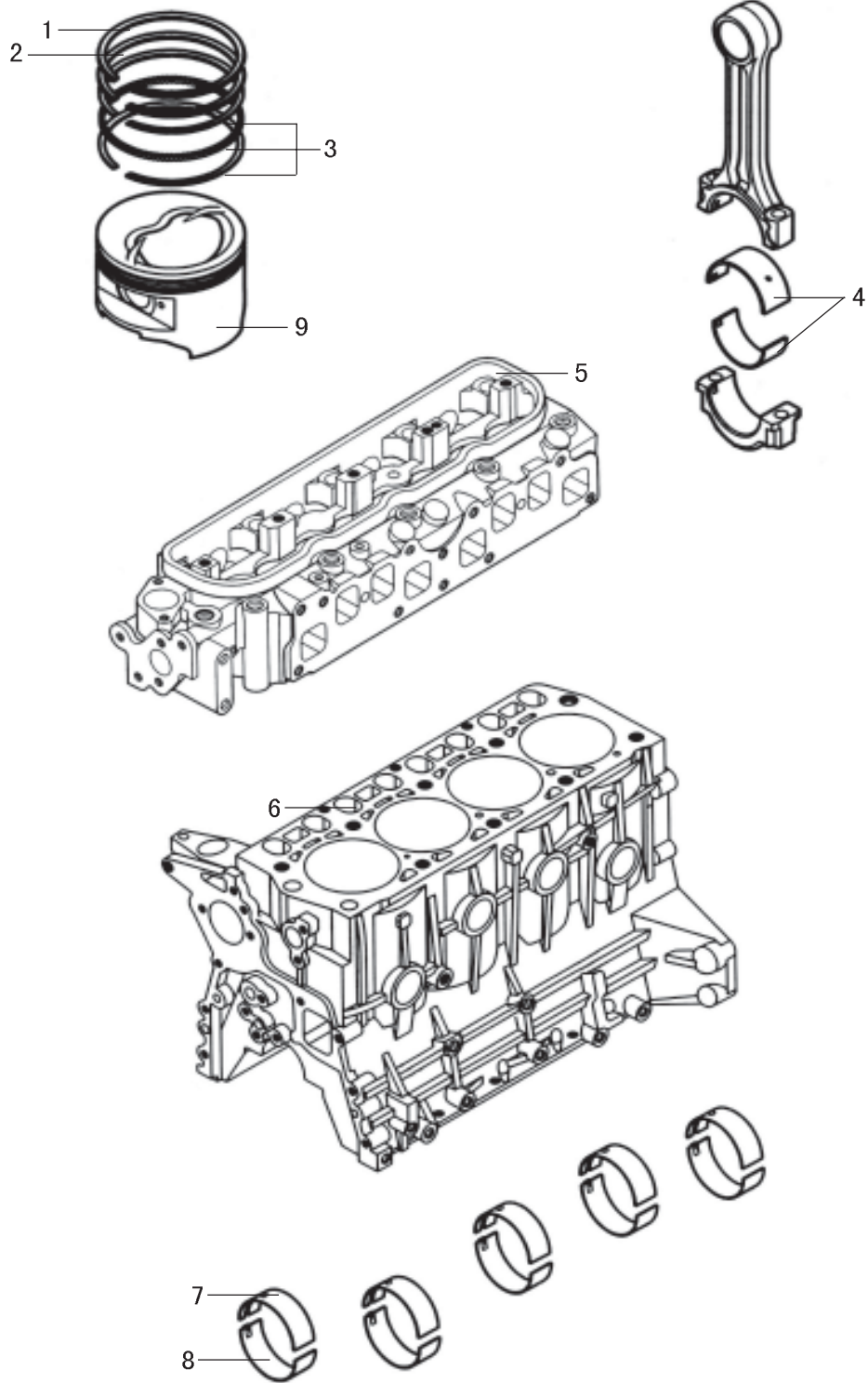
德尔福多点电喷汽油机电喷系统 DELPHI GASOLINE ENGINE MULTI POINT ELECTRIC INJECTION SYSTEM

序号 S/N	零部件代号 PART CODE	零部件名称 PART NAME	用量 QTY	规格 SPECIFICATION	备注 REMARK
1	3724100-E01	发动机线束(多点, 德尔福) ENGINE WIRE HARNESS(MULTI POINT, DELPHI)	1		
2	3609400-E01	曲轴转速传感器(多点, 德尔福) CRANK SHAFT SPEED SENSOR(MULTI POINT, DELPHI)	1		
3	3609500-E01	冷却液温度传感器(多点, 德尔福) COOLANT TEMPERATURE SENSOR (MULTI POINT, DELPHI)	1		
4	3609310-E01	进气温度传感器(多点, 德尔福) INTAKE TEMPERATURE SENSOR(MULTI POINT, DELPHI)	1		
5	3609300-E01	进气压力传感器(多点, 德尔福) INTAKE PRESSURE SENSOR (MULTI POINT, DELPHI)	1		
6	3604100-E01	碳罐电磁阀(多点, 德尔福) CANISTER ELECTROMAGNETIC VALVE (MULTI POINT, DELPHI)	1		
7	3609700-E01	氧传感器(多点, 德尔福) OXYGEN SENSOR (MULTI POINT, DELPHI)	1		
8	3608101-E01	ECU 支架 ECU BRACKET	1		
9	3607100A2-E01	油泵继电器(多点, 德尔福) FUEL PUMP RELAY (MULTI POINT, DELPHI)	1		
10	3607100A1-E01	ECU 继电器 ECU RELAY	1		
11	3608100-E01	ECU(多点, 德尔福) ECU (MULTI POINT, DELPHI)	1		
	3608100B-E01	ECU(德尔福) ECU (DELPHI)	1		赛弗四驱 SAFE 4WD
	3608100C-E01	ECU(德尔福) ECU (DELPHI)	1		赛弗二驱 SAFE 2WD

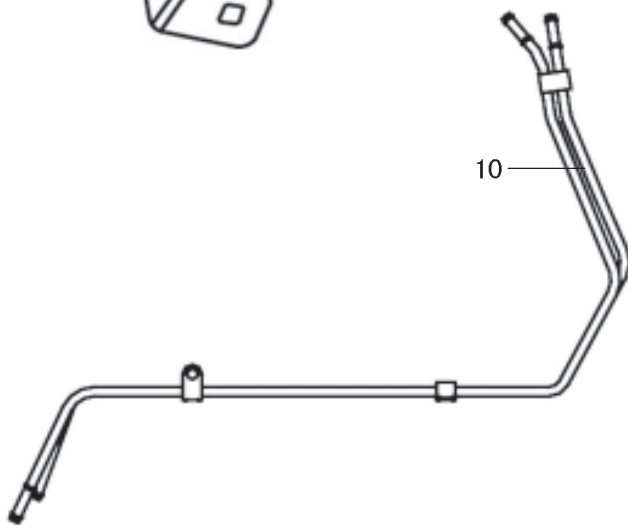
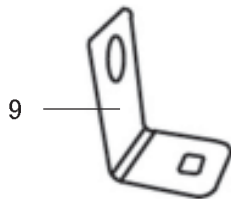
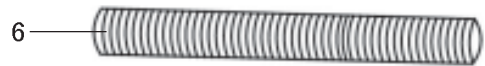
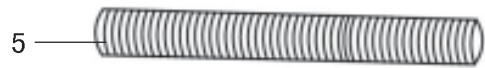
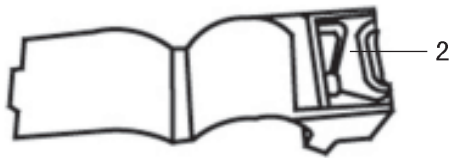
汽油机支承总成 GASOLINE ENGINE SUPPORT ASSEMBLY



欧III系统专用件(一) EUROIII SYSTEM SPECIFIC(1)



欧III系统专用件(二) EUROIII SYSTEM SPECIFIC(2)

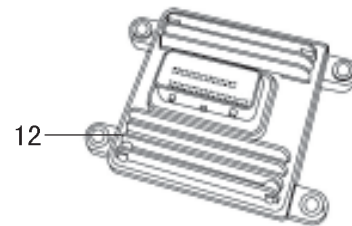
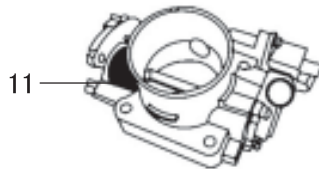
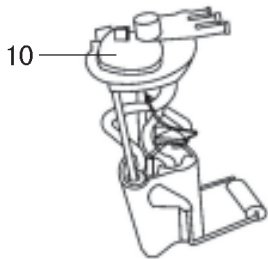
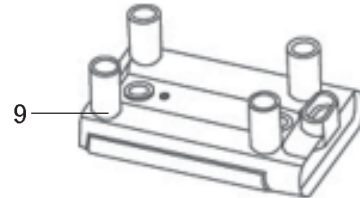
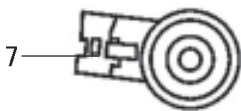
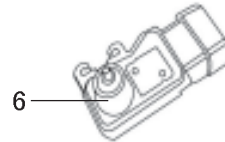
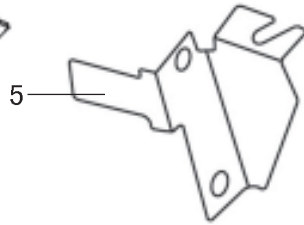
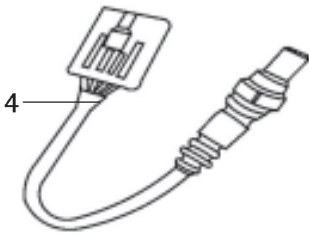
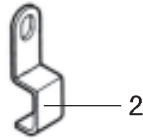


12

注意!
1. 安装时注意方向。
2. 气路连接处要密封。

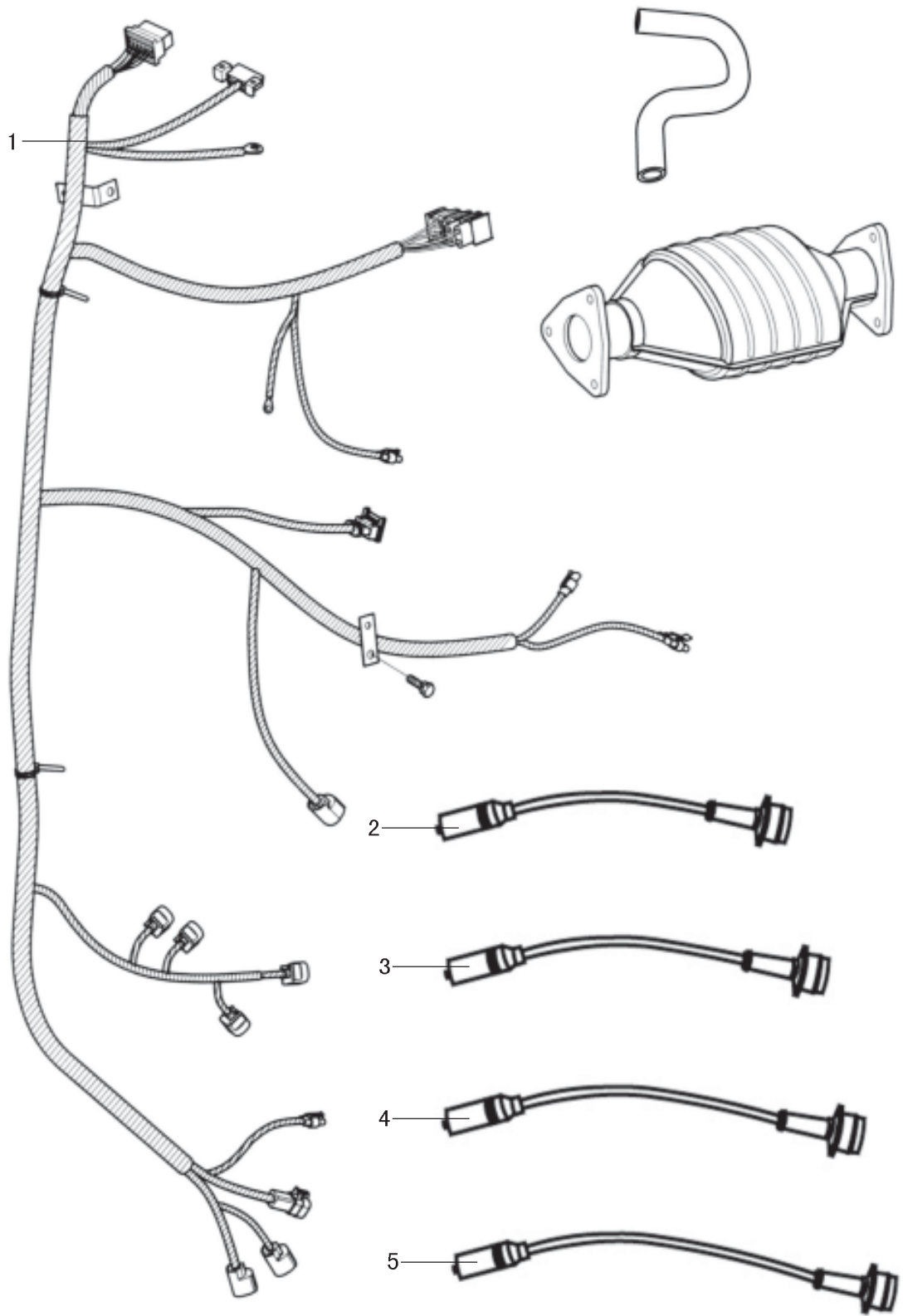
欧III系统专用件(二) EUROIII SYSTEM SPECIFIC(2)					
序号 S/N	零部件代号 PART CODE	零部件名称 PART NAME	用量 QTY	规格 SPECIFICATION	备注 REMARK
1	1108104-E07	油门拉线支架-节气门体 THROTTLE CABLE BRACKET-THROTTLE	1		
2	3600105-E07	线束夹(Φ15) WIRE HARNESS CLAMPING (φ 15)	1		
	3600103-E01	线束夹(Φ19) WIRE HARNESS CLAMPING (φ 19)	2		
3	1104101-E07	进油胶管 OIL INLET PIPE	1		
4	1104102-E07	回油胶管 OIL RETURN PIPE	1		
5	1104103-E07	进油胶管波纹管 OIL INLET RIPPLE HOSE	1		
6	1104105-E07	回油胶管波纹管 OIL RETURN RIPPLE HOSE	1		
7	3604105U-E07	碳罐电磁阀橡胶堵 CANISTER ELECTROMAGNETIC VALVE RUBBER PLUG	2		
8	1104104-E07	压力调节器胶管 PRESSURE REGULATOR HOSE	1		
9	3600102-E07	线束夹支架 WIRE HARNESS CLAMPING BRACKET	3		
10	1104020-E07-A1	汽油管组件 GASOLINE PIPE	1		
11	3602202J-E07	碳罐电磁阀胶管 CANISTER ELECTROMAGNETIC VALVE HOSE	1		
12	1003081-E07	欧III标签 MARK OF EURO III	1		

德尔福系统专用件 (欧III) DELPHI SYSTEM SPECIFIC (EURO III)

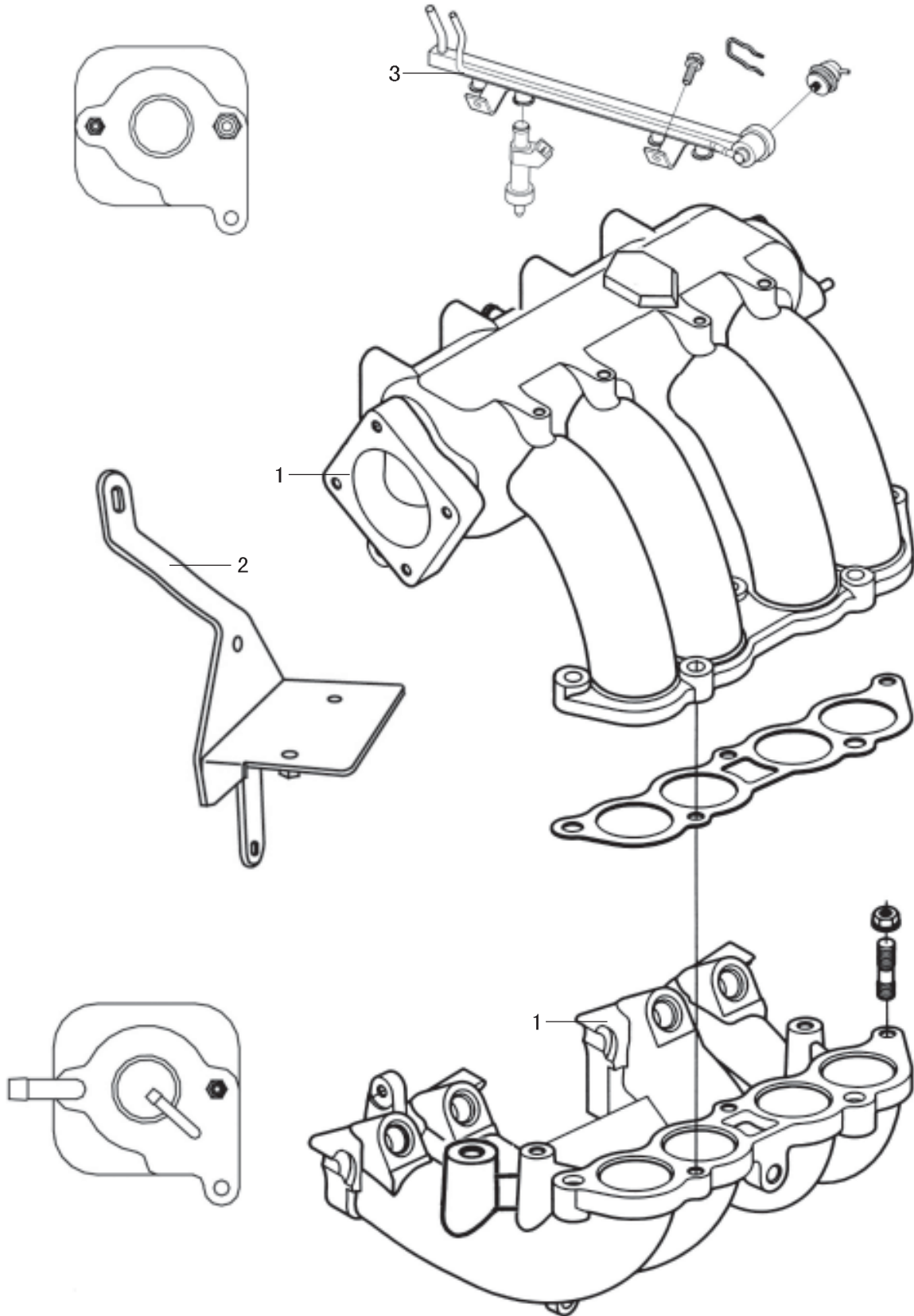


德尔福系统专用件(欧III) DELPHI SYSTEM SPECIFIC(EUROIII)					
序号 S/N	零部件代号 PART CODE	零部件名称 PART NAME	用量 QTY	规格 SPECIFICATION	备注 REMARK
1	GB/T 16679-1996	法兰螺栓 FLANGE BOLT	1		固定爆震传感器
2	3603201J-E07	进气温度压力传感器支架 INLET TEMPERARURE AND PRESSRUE SENSOR BRACKET	1		
3	3603500-E07	冷却液温度传感器 COOLING TEPERATURE SENSOR	1		15404280
4	3603600-E07	氧传感器 OXYGEN SENSOR	1		25325359
5	3602201J-E07	油门拉线及碳罐电磁阀支架 ACCELERATOR CABLE AND CANISTER ELECTROMAGNETIC VALVE BRACKET	1		
6	3603210-E07	进气温度压力传感器 INLET TEMPERARURE AND PRESSRUE SENSOR	1		12232201
7	3603410-E07	爆震传感器 KONCK SENSOR	1		25348220
8	3602210-E07	碳罐电磁阀 CANISTER ELECTROMAGNETIC VALVE	1		25351449
9	3705110-E07	点火线圈 IGNITION COIL	1		19005270
10	1106100UB-E07	汽油泵支架组件(F1) GASOLINE PUMP BRACKET SET (F1)	1		087
11	1008110-E07	节气门体总成 THROTTLE VALVE ASSMBLY	1		17202027
12	3601200-E07	电控单元 ECU ELECTRIC CONTROL UNIT	1		赛弗 SAFE
	3601200A-E07	电控单元 ECU ELECTRIC CONTROL UNIT	1		F1
	3601200B-E07	电控单元 ECU ELECTRIC CONTROL UNIT	1		迪尔 DEER

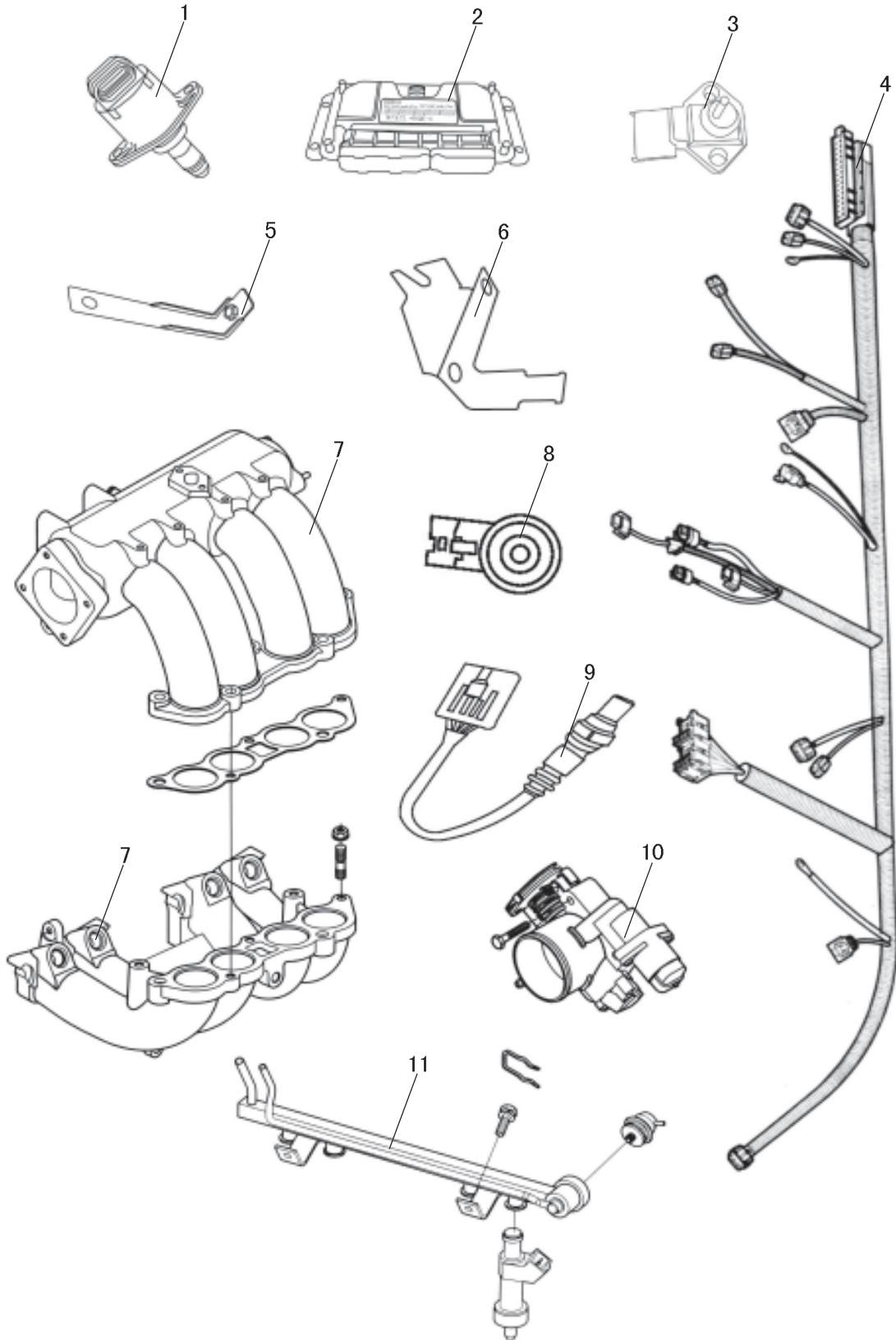
德尔福系统专用件 (欧III) DELPHI SYSTEM SPECIFIC (EURO III)



德尔福系统专用件 (欧III) DELPHI SYSTEM SPECIFIC (EURO III)



联电系统专用件 (欧III) UAES SYSTEM SPECIFIC (EURO III)



联电系统专用件(欧III) UAES SYSTEM SPECIFIC(EUROIII)					
序号 S/N	零部件代号 PART CODE	零部件名称 PART NAME	用量 QTY	规格 SPECIFICATION	备注 REMARK
1	3606100U-E07	步进电机 STEPPING MOTOR	1		0999CN0021
2	3608100U-E07	ECU ECU	1		0261201498
	3608100UA-E07	ECU(新底盘赛影2 驱) ECU NEW CHASSIS SING 2WD	1		0261201496
	3608100UB-E07	ECU(老底盘赛铃2 驱) ECU OLD CHASSIS SAILOR 2WD	1		0261201497
3	3609300U-E07	进气温度压力传感器 INTAKE-AIR TEMPERATURE PRESSURE SENSOR	1		0261230013
4	3723100HU-E07	长城联电发动机线束(SING) GW UAES ENGINE WIRING HARNESS	1		
5	1300022-E07	暖风胶管支架 RADIATOR HOSE BRACKET	1		
6	3604101UH-E07	油门拉线及碳罐电磁阀支架 ACCELEROGRAPH DISTAFF AND CANISTER ELECTROMAGNETIC VALVE BRACKET	1		
7	1008100U-E07	进气歧管总成(欧III联电系统) INTAKE MANIFOLD ASSEMBLY(E III UAES SYSTEM)	1		
8	3752600U-E07	爆震传感器 KNOCK SENSOR	1		0261231046
9	3609700U-E07	氧传感器 OXYGEN SENSOR	1		0258006028
10	1008110U-E07	节气门体总成 THROTTLE BODY ASSEMBLY	1		F01RA63901
11	1112100U-E07	燃油分配器总成 FUEL DISTRIBUTOR ASSEMBLY	1		F01RB0P032